



**საქართველოს ახალგაზრდა ეკონომისტთა ასოციაცია**

## **ანგარიში**

*2003 წლის სახელმწიფო ბიუჯეტისა და ზღვიანობის  
რაიონული ბიუჯეტის I კვარტლის მონიტორინგის  
სადებოების შესახებ*

*ბიუჯეტის გამოცემა პროექტის  
"გამწიფი და ბიუჯეტის" ფარგლებში*



პროექტი ხორციელდება დიდი ბრიტანეთის საგარეო უწყვეტი ორგანიზაცია  
Oxfam – საქართველოს სამოქმედო ომის მხარდაჭერით

## Si naar si

1. 2003 wl is saxel mwi fo biuj etis pirvel i kvartl is saSemosavl o nawil is moni toringi .....	4
2. central uri biuj etis pirvel i kvartl is xarj viTi nawil is moni toringi .....	13
2.1. central uri biuj etis xarj ebi ekonomikuri kl asifikaci is mi xedvi T .....	14
2.2 central uri biuj etis xarj ebi funqci onal uri kl asifikaci is mi xedvi T .....	15
2.3 central uri biuj etis xarj ebi organi zaci ul i kl asifikaci is mi xedvi T .....	17
3. social uri sferos dafinanseba central uri biuj etidan.....	22
3.1. central uri biuj etis xarj ebi social ur sferoze funqci onal uri kl asifikaci is mi xedvi T .....	22
3.2. ganaTI eba.....	24
3.3. j andacva .....	26
3.4. saqarTvel os social uri dazRvevi s erTiani saxel mwi fo fondi .....	28
4. 2003 wl is I kvartl is zugdi dis rai onul i biuj etis.....	30
moni toringi .....	30
4.1. Semosavl ebi .....	30
4.2. xarj ebi .....	33

## **wi nasi t yvaoba**

winamdebare angariSi `2003 wl is saxel mwifo biuj etisa da zugdidis raionul i biuj etis I kvartl is monitoringi- momzadebul ia saqarTvel os axal gazrda ekonomistTa asociaciis mier koal iciuri proeqtis \_ "gamWvirval e biuj eti"-s fargl ebSi, strategiul gamokvl evaTa institutTan, demokratiul inovaciaTa centrTan da britaneTis saqvel moqmedo organizaciis "oqsfamis" saqarTvel os warmomadgenl obasTan partniorobiT.

angariSi momzadebul ia saqarTvel os finansTa saministros, saqarTvel os parl amentis sabiuj eto ofisis, saqarTvel os parl amentis gadasaxadebisa da Semosavl ebis komitetis, `saqarTvel oSi ekonomikuri ganvitarebisa da siRaribis Semicirebis programis- proeqtis, zugdidis rai onis gameobis safinanso ganyofil ebis masal ebze dayrdnobiT.

## 1. 2003 wl is saxel mwifo biuj etis pirvel i kvartl is saSemosavl o nawil is monitoringi

2003 wl is saqarTvel os saxel mwifo biuj etis Semosavl ebis wl is prognozi 1127,4 milioni l arIT ganisazRvra, xol o deficitis dafinansebis odenoba \_ 239,8 milioni l arIT.

2003 wl is saxel mwifo biuj etis pirvel i kvartl is Semosavl ebis da deficitis dafinansebis prognozi Sesabamisad 248,11 da 75,16 milioni l arIT ganisazRvra.

ufro detal urad saxel mwifo biuj etis Semosavl ebis l kvartl is prognozebi ixil eT #1 cxril Si.

### cxril i #1. 2003 wl is saxel mwifo biuj etis l kvartl is Semosavl ebis prognozis cvl il ebis dinamika

(milioni l ar)

dasaxel eba	kvartl is prognozi 29 martis mdgomareobi T	kvartl is prognozi 30 martis mdgomareobi T	kvartl is prognozi 1 april is mdgomareobi T
saxel mwifo biuj etis Semosavl ebi	<u>252,46</u>	<u>243,46</u>	<u>248,11</u>
central uri biuj etis Semosavl ebi da grantebi	<u>186,38</u>	<u>177,38</u>	<u>181,04</u>
sagadasaxado Semosavl ebi	151,98	151,98	151,98
arasagadasaxado Semosavl ebi	<u>26,70</u>	<u>17,70</u>	<u>21,36</u>
grantebi	7,7	7,7	7,7
social uri fondi	53,84	53,84	53,84
sagzao fondi	12,23	12,23	12,23
deficitis dafinanseba	75,16	75,16	75,16
gardamaval i sabrunavi saxsrebi	2	2	2
saxazino val debul ebebi	13,5	13,5	13,5
erovnul i bankis sesxi	27,24	27,24	27,24
privatizaciidan Semosaval i	4,43	4,43	4,43
sainvesticio kreditebi	28	28	28

dasaxel eba	kvartl is prognozi 29 martis mdgomareobi T	kvartl is prognozi 30 martis mdgomareobi T	kvartl is prognozi 1 april is mdgomareobi T
sagadasaxado departamenti	<u>122,95</u>	<u>122,95</u>	<u>125,74</u>
sabaJo departamenti	<u>89,86</u>	<u>89,86</u>	<u>87,07</u>

***l kvartl is prognozi ramdenjerme Seicval a. gansakuTrebiT mniSvnel ovania is faqti, rom cvl il ebebi moxda kvartl is bol o sam dReSi.***

kerZod, 29 martis CaTvl iT central uri biuj etis arasagadasaxado Semosavl ebis l kvartl is prognozi Seadgenda 26,70 milion l ars. 30 marts aRniSnul i prognozi Semcirda 9 milioni l arIT

da gaxda 17,70 milioni l'ari. 1 aprilis t'vis kvartal av moxda aRniSnul i Semosavl ebis prognozisi cvl il eba da gaizarda 3,66 milioni l'ari. sabol ood kvartli is prognozma miiRo iseTi saxe, rogoric mocemul ia #1 cxril Si. savaraudod, Semosavl ebis prognozebi misadagebul iqna Sestrul ebis maCvenebel Tan. aRniSnul ze ufro detal urad gveqneba saubari biuj etis Sestrul ebis maCvenebel ebis ganxil visas.

unda aRiniSnos, rom ukve 1 aprilis (II kvartli is pirveli dRe) moxda sabaJo departamentis gegmis Semicreba 2,79 milioni l'ariT da zustad amave odenobiT gaizarda sagadasaxado departamentis gegma. ra Tqma unda, aRniSnul ic ganpirobetul i iyo faqtobriv Sestrul ebasTan gegmebis misadagebiT.

***xsenebul i manipulaciebi erT cnobil frazas gvagonebs: „Tu muhamedi ar midis mTasTan, maSin mTa midis muhamedTan“, anu gegma ki ar srul deba, aramed Sestrul ebis Sesabamisad igegmeba.***

miuxedavad gegmebiT aseTi manipul irebisa, 2003 wl is saxel mwifo biuj etis pirveli kvartli is Semosavl ebi mainc ver Sestrul da da Seadgina dagegmil is 92,8%, rac mTel i wl is maCvenebel is 20,4%-s Seadgens.

mcirediT aris gansxvavebul i (uaresobisken) central uri biuj etis Semosavl ebis maCvenebel i. pirveli kvartli is gegmasTan SefardebiT Sestrul eba Seadgens 92,1%, rac Sesabamisi wliuri maCvenebel is 20%-ia. aRniSnul i umTavresad gamoiwvia sagadasaxado Semosavl ebis mobilizebis dabal ma donem. kerZod, central uri biuj etis sagadasaxado Semosavl ebi Sestrul ebul ia kvartli is gegmis 89,3%-iT.

gacil ebiT saval alo mdgomareobaSia saxel mwifo sagzao fondis pirveli kvartli is Sestrul ebis maCvenebel i, romelic gegmis 73%-s Seadgens mxol od, xolo wliuri prognozisi maCvenebel Tan Sefardeba 18%-ia.

xsenebul i parametrebisagan gansxvavebiT, social uri dazRvevis fondis pirveli kvartli is Semosavl ebis maCvenebel i Sestrul ebul ia 100,1%-iT, rac Sesabamisi wliuri gegmis 22,1%-s Seadgens.

detal uri informacia saxel mwifo biuj etis Semosavl ebis Sestrul ebis Sesaxeb warmodgenil ia #2 cxril Si.

**cxrili #2. 2003 wl is saxel mwifo biuj etis I kvartli is Semosavl ebis Sestrul eba**

(milioni l'ari)

dasaxel eba	wl is prognozi	kvartli is prognozi	Sestrul eba	%	
				wl is prognozTan	kvartli is prognozTan
saxel mwifo biuj etis Semosavl ebi	1127,4	248,11	230,21	20,4%	92,8%
central uri biuj etis Semosavl ebi da grantebi	833,7	181,04	166,69	20,0%	92,1%
sagadasaxado Semosavl ebi	659,9	151,98	135,68	20,6%	89,3%
arasagadasaxado Semosavl ebi	78,4	21,36	23,21	29,6%	108,7%
grantebi	95,4	7,7	7,8	8,2%	101,3%
social uri dazRvevis fondi	244,2	53,84	53,89	22,1%	100,1%
sagzao fondi	49,5	12,23	8,93	18,0%	73,0%

deficiti s dafinanseba	239,8	75,16	59,36	24,8%	79,0%
gardamaval i sabrunavi saxsrebi	8,5	2	1,96	23,1%	98,0%
saxazino val debul ebebi	22	13,5	8,43	38,3%	62,4%
erovnul i bankis sesxi	40	27,24	19,51	48,8%	71,6%
privatizaciidan Semosaval i	41,5	4,43	3,47	8,4%	78,3%
sainvesticio kreditebi	127,8	28	25,99	20,3%	92,8%

dasaxel eba	wl is prognozi	kvartl is prognozi	Sesrul eba	%	
				wl is prognozTan	kvartl is prognozTan
sagadasaxado departamenti	511,7	125,74	125,91	24,6%	100,1%
sabaJo departamenti	389,1	87,07	67,13	17,3%	77,1%

social uri dazRvevis fondis Semosavl ebis Sesrul ebis maCvenebel i TiTqos garkveul i damSvidebis safuZvel s iZl eva, rom ara Semdegi garemoeba.

2003 wl is saxel mwifo biuj etis kanoniT gaTval iswinebul ia wina periodSi warmoqmnili saxel faso daval ianebis garkveul i nawil is dafarva. Sesabamisad biuj etis pirvel kvartal Sic daigegma biuj etidan Sesabamisi xarji. ra Tqma unda, xel fasis gacemasTan erTad unda iqnes dagegmil i social uri anaricxebi, romelic miimarTeba social uri dazRvevis fondSi da igi unda Seadgendes saxel faso fondis 31%-s, saqarTvel os sagadasaxado kodeqsis IX karis 29-e Tavis Sesabamisad. miuxedavad amisa, konkretul i uwyebebisaTvis wina wl ebis saxel faso daval ianebis dafarvis odenoba gacil ebiT nakl ebia, vidre masze dasaricxi social uri anaricxebi (ix. cxril i #3).

**cxril i #3. 2003 wl is I kvartal Si wina wl ebis saxel faso daval ianebebis dafarvis gegma**

(aTasi I ari)

dasaxel eba	odenoba
parl amenti	
xel fasebi	57
social uri anaricxebi	130,5
ganaTI ebis saministro	
xel fasebi	90,1
social uri anaricxebi	310,3
kul turis saministro	
xel fasebi	119,9
social uri anaricxebi	4469
sagareo saqmeTa saministro	
xel fasebi	3,6
social uri anaricxebi	37,7
sofl is meurneobis da sursaTis saministro	
xel fasebi	4,1
social uri anaricxebi	23,1
finansTa saministro	

xel fasebi	61,8
social uri anaricxebi	192,2
sportis saxel mwifo departamenti	
xel fasebi	9,1
social uri anaricxebi	22,3
mecnierebaTa akademia	
xel fasebi	273
social uri anaricxebi	1 235,8
saxel mwifo universitetebi	
xel fasebi	176,7
social uri anaricxebi	841,3

warmodgenili informacia miutitebs imaze, rom **saxel mwifom gadawyvita daefara wina periodSi warmoqnnil xel fasebze dasaricxi social uri dazrvevis gadasaxadi, raTa social uri dazrvevis fondis Semosavl ebis gegma Sesrul ebul iyo. Tumca, mocemul etapze, uari Tqva xel fasebis gacemaze.**

xel isufl ebam aseTi „brwyinval e“ gadawyvetil eba ar ikmara da konkretul i xarjebis gawevis drosac prioritetad aircia social uri anaricxebis gadaxda xel fasebis gacemis garese. xsenebul i naTI ad Cans 2003 wl is pirveli kvartli xarjebis balansSi. kerZod, **pirveli kvartli is dagegmil i xel fasebis xarjebis gegma Sesrul ebul ia 64%-iT, xol o social uri anaricxebis \_ 85%-iT.**

amgvari midgoma sruliad ewinaaRmdegeba social-ekonomikur azrovnebas da adasturebs erTaderTs, **saxel mwifos prioritetia Semosavl ebis parametrebis furcel ze Sesrul eba da ara real uri xarjebis gaweva.**

mkiTxvel is yuradRebas gavamaxvil ebT biujetis saSemosavl o nawil is Sesrul ebis kidev erT manker praqtikaze, romel sac Sesazl ebel ia ewodos „**prakrutkebis**“ meTodi.

misi arsi SemdegSi mdgomareobs: biujetid an Tanxa gaicema pirze, romel sac Tavis mxriv biujetis davalianeba gaacnia. Sesabamisad, xazinidan Tanxis gaSvebis brZanebamde, sagadasaxado organobis Sesabamisi muSakebi ukve gafrTxil ebul ni arian am Tanxebis saswrafod biujetSi „amobrunebaze“.

amis naTel i magal iTia **kompania AES-Tel asTan dakavSirebul i erTi gaxmaurebul i faqti.** kerZod, saqarTvel os finansTa saminstros saxazino samsaxuris monacemebiT 2003 wl is 24-28 martSi (martis Tvis me-4 kviris monacemebi) gaweuli aqvs 2 milion 700 aTasi l aris xarji energetikis saminstroze energoseqtoris subsidi rebisaTvis, romel ic Tavis mxriv gadaeca AES-Tel ass. 29-30 martisaTvis xsenebul i kompaniis sabanko angariSi dayadaRda da biujetis sasargebl od „amobrunda“ zustad 2 milion 700 aTasi l aris.

**umetes SemTxvevaSi aseTi operaciebi TviT gadamxdel is TanxmobiT xorciel deba.**

ra Tqma unda winaaRmdegi aravin ar aris, rom biujetmac da gadamxdel mac erTmaneTis winaSe arsebul i yvel a val debul eba Seasrul os. amasTan, gaumarTl ebl ad migvaCnia Tanxa mieceT mxol od arakeTil sindisier gadamxdel ebs, visac sabiujeto davalianeba aqVT, im

mizniT, rom es Tanxa meore dResve „amobrundeba“ biuj etSi da ar gaiCES Tanxebi patiosan gadamxdel ebze.

aseve gasaTval iswinebel ia is garemoeba, rom 1 mil ioni l aris 10- j er „daprakrutkebiT“ miviRebT furcel ze Sesrul ebul 10 mil on l ars, roml idanac 1,1 mil ion l arisac ki ver davxarj avT xel fasebze Tu saxel mwifos sxva social ur val debul ebebze.

***Cveni SefasebiT, 2003 wl is pirveli kvartl is Semosavl ebis minimum 42-43 mil ioni l ari „prakrutkebis“ meTodiT aris Sesrul ebul i.***

swored amgvari “operaciebis” gamoa saqarTvel os 2003 wl is pirveli kvartl is naerTi biuj etis sagadasaxado Semosavl ebis Sesrul ebis maCvenebl ebi disproporciul i (ix. cxril i #4).

**cxril i #4. 2003 wl is l kvartal is naerTi biuj etis Sesrul eba specfondobis gareSe**

(aTasi l ari)

dasaxel eba	gegma	faqti	Sesrul eba %-Si
<b>sagadasaxado Semosaval i spec. fondobis gareSe</b>	234673	<b>221596</b>	94,4%
saSemosavl o gadasaxadi	37628	30312	80,6%
mogebis gadasaxadi	22195	22660	102,1%
dRg	108445	111330	102,7%
<i>sagadasaxado departamenti</i>	<i>58404,7</i>	<i>63576</i>	<i>108,9%</i>
<i>sabaJo departamenti</i>	<i>50040,3</i>	<i>47754</i>	<i>95,4%</i>
aqci zi	26431	17590	66,6%
<i>sagadasaxado departamenti</i>	<i>6923</i>	<i>4972</i>	<i>71,8%</i>
<i>sabaJo departamenti</i>	<i>19508,6</i>	<i>12618</i>	<i>64,7%</i>
sabaJo gadasaxadi	16192	14262	88,1%
mi wi s gadasaxadi	5290	3893	73,6%
bunebrivi resursebiT sargebl obis gadasaxadi	2231	1802	80,8%
qonebis gadasaxadi	7682	9928	129,2%
mavne nivTierebebiT garemos dabinZurebi saTvis gadasaxadi	4301	1800	41,9%
qonebis gadacemis gadasaxadi	1472	1556	105,7%
adgil obrivi gadasaxadebi	1380	5053	366,2%
fiqsirebul i gadasaxadi msubuqi avtomobil ebis importze	1426	1410	98,9%

cxril idan dasaxel oT mxol od oTxi maCvenebl i. adgil obrivi gadasaxadebi Sesrul ebul ia 366,2%-iT, dRg \_ 102,7%-iT, aqci zi \_ 66,6%- iT da mavne nivTierebebiT garemos dabinZurebi saTvis gadasaxadi \_ 41,9%-iT. gasaTval iswinebel ia, rom am ukanasknel is ZiriTad sagadasaxado bazas wadmoadgens navTobproduqtebis importi.

***vfiqrobt, rom aseT maCvenebl ebs komentari ar swirdeba.***



biuj etis Sesrul ebis kidev erTi mankeri da gansakuTrebIT saSiSi praqtikaa damkvidrebul i sagadasaxado da sabaJo organoebSi. mas pirobiTad SeiZl eba ewodos „**winaswari gadaxdebis**” meTodi.

is, rom aRniSnul i operaciebi gamonaklisi ar aris da maT sistematuri xasiaTi gaaCnia, mowmobs saqarTvel os parlamentis gadasaxadebisa da Semosavl ebis komitetis daskvna.

kerZod, Semowmebis procesSi gamovlinda ramdenime firma, romel sac 2002 wl is meore naxevridan sabaJos angariSze milionobIT l ari aqvs Setanil i yovel Tviurad, ise, rom erTi TeTric ki ar aqvT gamoyenebul i daniSnul ebiT da importi saerTod ar ganuxorciel ebiaT. aRniSnul s Semdegi magal iTebic adasturebs:

S.p.s "bemonma", 2002 wl is 30 ivl iss #3 sagadasaxado daval ebiT, yovel gvare sagadasaxado val debul ebis gareSe gadaricxa regional ur sabaJo "rkinigzis" #144 sadepozito angariSze 300 aTasi l ari.

aRniSnul i Tanxa "bemons" Tavisi tvirTebis gansabajebl ad ar gamouyenebia da mTlianad gadacemul iqna sxva firmebze 2, 7 da 8 agvistos.

31 agvistos #1 sagadasaxado daval ebiT \_ S.p.s "bemonma" isev gadaixada 150 aTasi l ari yovel gvare sagadasaxado val debul ebis gareSe, romel ic Semdeg TveSi weril ebiT sxva importiorebs gadasca.

28 seqtembers, "bemonis" mier Caricxul i iqna sabaJoze 250 aTasi l ari, xolo 31 oqtombers 300 aTasi l ari, saidanac ise rogorc wina SemTxvevaSi, sakuTari saqonl is gansabajebl ad TeTric ar daujarjavs da warmoqmnil i aqtivebi mTlianad sxva firmebze iqna gadacemul i.

S.p.s "T da T fuel treidingma", 2002 wl is 31 maisidan noembris Tvis CaTvl iT, sagadasaxado val debul ebis gareSe regional uri sabaJo "rkinigzis" angariSze #21, #26, #27, #33, #34, #35, #36, #41, #42, #51, #52, #55 da #56 sagadasaxado daval ebebiT Caricxa sul 2,94 ml n. l ari. aRniSnul i Tanxidan sakuTari ganbajebul i tvirTebis (saqonl is) gadasaxadebs moxmarda 241 aTasi l ari. danarCeni 2,7 ml n. l ari sxvadasxva weril ebiT gadacemul i iqna aqtivis saxiT sxvadasxva importiorebze.

gansakuTrebul i SemTxveva gvaqvs Sps "oil endTan" dakavSirebiT. aRniSnul ma firmam, 2002 wl is 29 ivl isidan \_ noembris Tvis CaTvl iT sagadasaxado val debul ebis dadgomis gareSe imave sabaJos #144 angariSze, sagadasaxado daval ebebiT (#1, #0, #1, #0, #6, unomro, #65 da isev #1) gadaricxa sul 4,4 ml n l ari. garda amisa, 15 noembris #01-05/0755 weril iT mis baratzze gadmotanil iqna sxvisi aqtivis Tanxidan 500 aTasi l ari da sabol ood aRniSnul i Tanxis gaTval iswinebiT mas warmoeSva aqtivi (zedmetoba) saerto Tanxit 4,9 ml n l ari. aRniSnul i Tanxidan sakuTari ganbajebul i tvirTebis gadasaxadebs moxmarda 224 aTasi l ari. danarCeni 4,7 ml n. l ari sxvadasxva weril ebiT agvistoSi, seqtemberSi, oqtombersa da noemberSi gadacemul i iqna aqtivis saxiT sxvadasxva importiorebze.

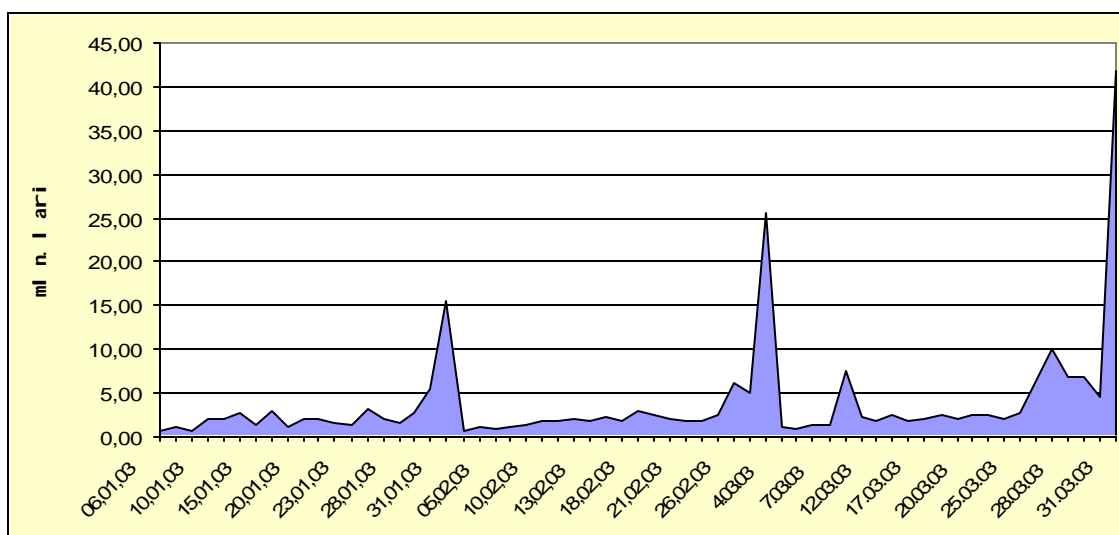
anal ogiuri gadaricxvebi sxva firmebsac aqvT ganxorciel ebul i. aseTi operaciebis mimart eWvs isic azl ierebs, rom **xSir SemTxvevaSi biuj etSi Tanxebis Casaricxad gamoyenebul ia sabanko krediti**. saqarTvel os finansur bazarze arsebul i saprocento ganakvetis maRali done, agreTve komerciul bankebSi dawesebul i mkacri sagarantio moTxovnebi gvaizul ebs vifiqroT, rom **aRebul i kreditebis**

**ukan real obaSi sakmaod maRal i Tanamdebobis pirebis sityvieri da ara mxol od sityvieri garantiebi unda idges.**

yuradReba mivaqciOT gadaricxvebis periods. isini yovel Tvis emTxveva Tvis bol o ricxvebs.

samwuxarod aseTive konkretul i informacia ar gagvaCnia sagadasaxado departamentis kontrol irebad gadamxdel ebze. aseve j er-jerobiT ar arsebobs 2003 wl is pirvel i kvartl is anal ogiuri monacemebi, magram Tu Sesrul ebis maCvenebl ebs gavaanal izebT dReebis mixedviT, naTel i gaxdeba, rom amJamad xsenebul i praqtika gamoiyeneba intensiurad da SesaZl ebel ia wina wl ebze meti odenobebiTac (ix. diagrama #1).

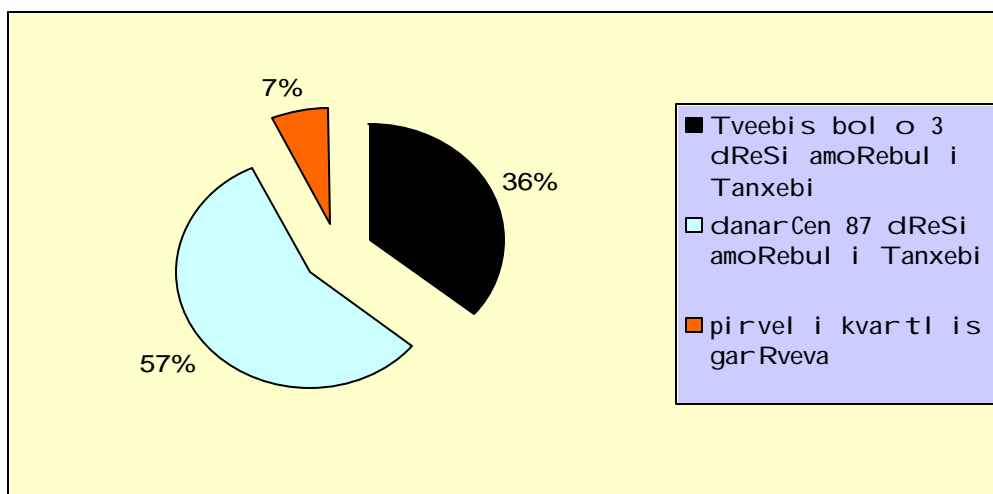
**diagrama #1. 2003 wl is saxel mwifo biuj etis pirvel i kvartl is Semosavl ebi dReebis mixedviT**



diagramidan naTI ad Cans, rom saxel mwifo biuj etSi Semosavl ebi udidesi nawil is mobil izeba Tvis bol o dReebSi xdeba da mas mzardi xasiaTi gaaCnia. **2003 wl is 31 ianvars saxel mwifo biuj etSi mobil izebul iqna 15 630 000 l ari (Tvis Semosavl ebi 31%), 28 Teberval s \_ 25 630 000 l ari (39%), xol o 31 marts \_ 41 800 000 l ari (37%).**

pirvel i kvartl is Tveebis bol o sam dReSi amoRebul iqna mTel i Semosavl is 36% (ix. diagrama #2).

**diagrama #2. 2003 wl is saxel mwifo biuj etis pirvel i kvartl is Semosavl ebi mobil izebis vadebiT warmodgenil i Sefardeba**



saintereso maCvenebl ebia pirvel i kvartl is arasagadasaxado Semosavl ebSi c.

2003 wl is pirvel i kvartl is prognozi Sestrul da gadaWarbebiT - 108,7%-iT. wl is gegmasTan SedarebiTac sakmaod kargi maCvenebl eia - 29,6% (ix. #5 cxril Si)

**cxril i #5. 2003 wl is saxel mwifo biujetis I kvartl is arasagadasaxado Semosavl ebis Sestrul eba**

(aTasi l ari)

dasaxel eba	wl is prognozi	kvartal is prognozi	Sestrul eba	%	
				wel Tan Sefardeb a	kvartal Tan Sefardeba
<b>arasagadasaxado Semosavl ebi</b>	<b>78400</b>	<b>21356</b>	<b>23210</b>	<b>29,6%</b>	<b>108,7%</b>
<b>Semosavl ebi gacemul i kreditebidan</b>	16000	1000	1008,5	6,3%	100,9%
Semosavl ebi ucxouri kredi tebiT gacemul i sesxebidan	8000	850	853,3	10,7%	100,4%
Semosavl ebi Sida saxel mwifo resursebiT gacemul i sesxebidan	8000	150	155,2	1,9%	103,5%
<b>dividendebi</b>	16000	910	916,3	5,7%	100,7%
<b>miwis privatizaciidan miRebul i Semosavl ebi</b>	2000	300	311,4	15,6%	103,8%
<b>saqarTvel os erovnul i bankis 2002 wl is mogebis transferi</b>	15000	15000	16000	106,7%	106,7%
<b>Semosavl ebi sakuTrebidan da samewarmeo saqmianobidan</b>	1000	100	169,6	17,0%	169,6%
<b>administraciul i mosakrebl ebi da gadasaxdel ebi, Semosavl ebi arakomerციul i da Tanmdevi (araZiriTadi) gayidvidan</b>	10000	1500	1525,3	15,3%	101,7%
<b>administraciul i jarimebidan da sanqciebidan miRebul i Semosaval i</b>	1300	300	300,9	23,1%	100,3%
<b>sxva Semosaval i</b>	17100	2246	2978	17,4%	132,6%

amasTan, Sestrul ebul i 23,2 milioni l aridan, 16 milioni l ari erovnul i bankis mogebis transferia, roml is biujetSi Caricxva

wel iwadSi mxol od erTxel xdeba. anu, amis gareSe arasagadasaxado Semosavl ebis saxiT biuj etSi mobil izebul ia 7,2 mil ion i l ari.

**Sesabamisad, *erovnul i bankis mogebis gareSe gaangariSebisas miviRebT, rom arasagadasaxado Semosavl ebi wl is prognozTan SefardebiT mxol od 11,37%-iT aris Sesrul ebul i.***

gacil ebiT saval al o mdgomareobaa gacemul i kreditebidan mobil izebul Tanxebze. rogorc me-5 cxril idan Cans, pirvel i kvartl is prognozi Sesrul ebul ia 100,9%-iT, Tumca wl is gegmasTan SedarebiT Sesrul ebaa 6,3%.

deficitis dafinasebis wyaroebidan mobil izebul ma Tanxebma 59,36 mil ion i l ari Seadgina, rac kvartl is prognozis 79%-s Seadgens (ix. #2 cxril Si).

Tavidanve cxadi iyo, rom aRniSnul i maCvenebel i ver Sesrul deboda. misi erT-erTi umniSvel ovanesi komponenti (erovnul i bankis grZel vadiani sesxi) pirvel kvartal Si daigegma 27,24 mil ion i l aris odenobiT. Tumca arsebobda saerTaSoriso saval uto fondis rekomendacia, rom igi 19 mil ion l ars ar unda gadacdenoda. faqtobriwa Sesrul eba mac swored 19,51 mil ion i l ari Sedgina. ***anu winaswarve daigegma Seusrul ebadi maCvenebel i.***

deficitis dafinasebis ganxil visas SeuZl ebel ia yuradReba ar mivaqciOT gardamaval sabrunav saxsrebs (naSTs).

2003 wl is saxel mwifo biuj etis kanoniT naSTi unda iyos 8,5 mil ion i l ari. aqedan 2 mil ion i l ari central uri biuj eti, 4,8 mil ion i l ari social uri fondi da 1,7 mil ion i l ari sagzao fondi.

pirvel i kvartl is bal ansebis anal izi gvaCvenebs, rom central uri biuj etis naSTi sinamdvil eSi iyo - 1,96 mil ion i l ari, social uri fondis naSTi - 3,86 mil ion i l ari, xol o sagzao fondis naSTi ki - 1,71 mil ion i l ari. anu, finansTa saministrosaTvis Tavidanve kargadiyo cnobil i naSTis zusti maCvenebel ebi. gasakviria, ratom iyo sami Tvis prognoza (gegma) da Sesrul ebaSi (faqti) miTiTebul i Sesabamisad 2 da 1,96 mil ion i l ari?

***zemoxsenebul i cxadyofs, rom uaxl oes momaval Si dRis wesrigSi dadgeba 2003 wl is saxel mwifo biuj etis Sesworebis sakiTxi.***

***am sakiTxze Cvenjer kidev biuj etis damtkicebamde vsaubrobdit da vvaraudobdit, rom biuj eti Sesamcirebel i iyo daaxl oebiT 150 mil ion i l ariT. warmodgenil i informacia kidev ufro amyarebs Cvens mosazrebebs.***

***SedarebiT mokrZal ebul i prognozi gaakeTa saerTaSoriso saval uto fondma, romel mac moiTxova biuj etis koreqtireba 113 mil ion i l aris fargl ebSi.***

***al baT pirvel i kvartl is Sesrul ebis maCvenebel ebis da meTodebis gaanal izebis Semdeg maTi prognozi ufro pesimisturi gaxdeba (saerTod Tu eqnaT survil i saqarTvel oze raime prognozebis gakeTebisa).***

## 2. central uri biuj etis pirvel i kvartl is xarj viTi nawil is monitoringi

central uri biuj etis 2003 wl is I kvartl is xarj ebi 256,2 ml n l aris odenobiT daigegma, xol o faqtobrivma xarj ma 205,9 ml n l ari, rac gegmis 80%-s Seadgens.

aRsaniSnavia rom absol uturi maCvenebl ebis wina wl ebTan SedarebiT sakmaod damaimedebel i suraTi ixateba (ix. cxrili #6). 2003 wl is pirvel kvartal Si daxarj ul ia 205.9 ml n l ari, rac yvel aze metia 1998-2003 wl ebis anal ogiur maCvenebl ebTan SedarebiT. amastan, I kvartl is biuj etis xarj ebi aSS dol arebSi mxol od 1998 wl is maCvenebl s Camouvardeba, rodesac 1 aSS dol ari 1.3 l aris eqval enti iyo, rac udavod warmateba da dadebiTi faqtoria.

**cxrili #6. saqarTvel os 1998-2003 wl ebis central uri biuj etis xarj ebi Tveebis da I kvartl is mixedviT.**

(ml n l arebSi da aSS dol arebSi)

Tveebi/kvar-tal i		ianvari		Teberval i		marti		I kvartal i	
	wl ebi	ml n l ari	ml n dol ari	ml n l ari	ml n dol ari	ml n l ari	ml n dol ari	ml n l ari	ml n dol ari
xarj ebi	1998	32.9	24.9	43.1	32.4	77.3	57.7	153.3	115
	1999	40.2	19.4	34.6	15.2	56.2	24.9	131	59.5
	2000	28.1	13.8	41	20.7	44.6	22.4	113.7	56.9
	2001	30.1	14.9	32.8	15.9	49.7	24	112.6	54.8
	2002	54.3	24.8	50.1	22.6	62.9	28.2	167.3	75.6
	2003							205.9	93.6

aRsaniSnavia isic, rom central uri biuj etis 2003 wl is mTl iani xarj ebi daigegma 1,202 ml n l aris odenobiT da I kvartl is faqtobrivma xarj i (205,9 ml n l ari) wl iuris mxol od 17%-s Seadgens (ix. cxrili #7). **aRniSnul i garemoeba kidev erTxel aaSkaravebs mosal odnel i sekvestris gardauval aucil ebl obas, rasac Cven j er kidev 2003 wl is saxel mwifo biuj etis proeqtis ganxil visas avRniSnavdiT.**

## 2.1. central uri biuj etis xarj ebi ekonomikuri kl asifikaciis mixedviT

2003 wl is I kvartl is xarj ebi ekonomikuri kl asifikaciis Wril Si ganxil va kidev erTxel adasturebs imas, rom qveyanaSi ar tardeba gaazrebuli da mizanimarTuli fiskaluri politika da rogorc sagadasaxado da sabajo organoebi, aseve finansTa saministros nebismieri saqveuwyebodawesebul ebi energia mimarTulia Semosavl ebi gegmebis mxol od formaluri Sesrul ebi saken.

Zal zed Znel ia fiskal ur politikaze saubari, rodesac 2003 wl is I kvartal Si Zal ovani uwyebebis gareSe Sromis anazRaurebam 8.9 ml n l ari, xol o damqiravebl idan anaricxebma 6.9 ml n l ari Seadgina, anu, real urad anaricxebi Sromis anazRaurebis 77%-ia. Zal ovani uwyebebis TanamSroml ebi damqiravebl idan anaricxebs srul ad ar ixdian, amitom centraluri biuj etis xel fasebisa da anaricxebis realuri Tanafardobis dasadgenad, umj obesia analizis dros maTi cal ke ganxil va.

### cxrili #7. saqarTvel os biuj etis I kvartl is xarj ebi ekonomikuri kl asifikaciis mixedviT

(aTas I arebSi)

xarj ebi	2003 wl is gegma	I kv-is gegma	I kv-is xarj i	kv-is gadaxra	%	
					kvarta I Tan Sefard eba	wel Tan Sefard eba
<b>muSa-mosamsaxureTa Sromis anazRaureba</b>	173,983.6	33,170.4	21,231.0	11,939.4	64%	12%
m. S. Zal ovani uwyebebis gareSe			<b>8,901.5</b>			
<b>damqiravebl idan anaricxebi</b>	36,220	8,882.1	7,586.0	1,296.1	85%	21%
m. S. Zal ovani uwyebebis gareSe			<b>6,894.8</b>			
<b>mivl inebebi</b>	8,510.4	1,573.0	1,098.7	474.3	70%	13%
<b>sxva saqonel i da momsaxureba</b>	261,961.5	36,988.0	23,481.3	13,506.7	63%	9%
m. S. kvebis xarj ebi	20,167.8	5,717.00	3,637.0	2,080.0	64%	18%
<b>procentebis gadaxda</b>	137,659.5	42,626.7	47,441.7	4,815.0	111%	34%
m.S. diskonti saxazino val debul ebebze	13,659.5	6,140.2	6,139.7	-529	100.0	44.9
<b>subsidiebi da mimdinare transferebi</b>	307,601.9	90,299.5	65,123.2	25,176.3	72%	21%
<b>kapitaluri xarj ebi</b>	20,823.1	1,036.8	315.6	721.2	30%	2%
<b>dakrediteba gamokl ebiT</b>	255,500	41,627.5	39,617.6	2,009.9	95%	16%
<b>s u l</b>	<b>1,202,260</b>	<b>256,204.0</b>	<b>205,895.1</b>	<b>50,308.9</b>	80%	17%

**2003 wl is I kvartl is biuj etis Sesrul eba kidev erTxel asaxavs saval alo mdgomareobas saqarTvel os fasiანი qaral debis bazarze.** 2003 wl is ianvar-martSi Semosavl ebma saxel mwi fo saxazino

val debul ebebidan 8,43 ml n l ari (ix. cxrili #2), xol o diskontma saxazino val debul ebebze 6.1 ml n l ari Seadgina (ix. cxrili #6). **amasTan, saxazino val debul ebebze diskontis wliuri gegma gansazRvrul ia 13.7 ml n l ariT da pirvel ive kvartal Si 6.1 ml n l arisanu 45%-is gaxarj va gvafiqrebinebs, rom saxazino val debul ebebis diskontze wli is ganmavl obaSi faqtobrivad 25 ml n l aramde daixarj eba.**

**rodesac kanoniT gansazRvrul dacul muxl ebSi seriozul i garRvevebia da l kvartal Si central uri biujetidan Sromis anazRaurebis wliuri gegmis mxol od 12% dafinansda, Cvenis azriT, 1 ml n l arze meti mivl inebebze, 13 ml n l arze meti sxva saqonel ze da momsaxurebaze (saidanac 2,6 ml n l ari Seadgens transportisa da teqniki Senaxvis xarj ebs, 700 aTasi l ari rbil inventars da uniformebs, 800 aTasi l ari special uri programebis mosaxurebas, 11,9 ml n l ari sxva xarj ebs da a. S.) ar unda ixarj ebodes (ix. danarTi #1).**

## **2.2 central uri biujetis xarj ebi funqcional uri kl asifikacii mixedviT**

ukanasknel periodSi biujetis saSemosavl o nawil is "prakrutkebis" da sxva finansuri "operaciebis" meSveobiT Sestrul ebas kidev erTxel aaSkaravebs central uri biujetis xarj ebi funqcional ur Wril Si ganxil va **saxazino samsaxuris angarisze arsebul i naRdi ful is deficitis gamo arasrul adaa dafinansebul i social urad mniSvnel ovani dargebi: social uri dazRveva da socuzrunvel yofa - kvartl is gegmis 56%, wli is gegmis 21%; janmrTel obis dacva - 54% (kvartal uri) da mxol od 3% (wli iuri); ganaTl eba 67% (kvartal uri) da 12% (wli iuri). amave dros, saTbob-energetikul i kompl eqsi, romelic "prakrutkebis" ZiriTad wyaros warmoadgens, dafinansda kvartal uri gegmis 98%-iT, xol o wli iuris 46%-iT.**

arasistemurad xdeba sxva dargebis dafinansebac central uri biujetidan (ix. cxrili #8 da danarTi #2). l kvartl Si saerTo daniSnul ebi saxel mwifo momsaxureba dafinansda 84%-iT (wli iuris 15%), Tavdacva 75%-iT (16%), sofl is meurneoba 29%-iT (7%), mrewvel oba, mSenebl oba 43%-iT (6%) da a. S.

**sofl is meurneobis da ganaTl ebi arasrul ad dafinanseba gamoiwvevs im samwuxaro Sedegs, rasac adgili hqonda 2002 wel s. kerZod, gasuli wli is ganmavl obaSi saxel mwifom ver miiRo evrogaerTianebs gansakuTrebul i finansuri daxmarebis programiT gaTval iswinebul i granti 11,5 ml n evros odenobiT, vinaidan ar Sestrul da sofl is meurneobis da ganaTl ebi dafinansebis kuTxiT aRebul i val debul ebebi. amasTan, saqartvel os aRmasrul ebel xel isufl ebase da evrokavSirs Soris SeTanxmebebiT aRebul i val debul ebebis aRsrul eba "2003 wli is saxel mwifo biujetis Sesaxeb" kanonis me-17 muxl is mixedviT, saxel mwifo biujetis erT-erT prioritetul RonisZiebedadaa miCneuli.**

**cxril i #8. saqarTvel os 2003 wl is I kvartl is biuj etis xarj ebi  
funqional uri kl asifikaciis mixedviT**

(aTas I arebSi)

<b>kodi</b>	<b>xarj ebi</b>	<b>wl is gegma</b>	<b>I kvartl is gegma</b>	<b>I kvartl is faqti</b>	<b>kvartal Tan Sefardeba</b>	<b>wel Tan Sefardeba</b>
01 00	saerTo daniSnul ebis sax. momsaxureba	315 075.7	563 39.3	47 305	84%	15%
02 00	Tavdacva	74 462.3	15 709.3	11 790.8	75%	16%
03 00	sazogadoebrivi wesrigi da UuSiSroeba	119 209.8	26 564.5	17 188.6	65%	14%
04 00	ganaTI eba	77 396.3	13 693.2	9 160	67%	12%
05 00	j anmrTel obis dacva	54 835.5	2 657.7	1 430.6	54%	3%
06 00	social uri dazRveva da socuzrunvel yofa	108 036.8	39 755.4	22 316.2	56%	21%
07 00	sabinao- komunal uri meurneoba	4 787	1 034.8	618.6	60%	13%
08 00	saqmianoba kul turis, rel igiisa da sportis sferoSi	28 907.9	7 628.6	5 235.5	69%	18%
09 00	saTbob- energetikul i kompl eqsi	37 264.5	17 570.8	17 175	98%	46%
10 00	sofl is meurneoba, satyeo meurneoba, meTevzeoba da monadi reoba	29 029.1	6 838.9	1 991.8	29%	7%
11 00	mrewvel oba, mSenebl oba	1 501.2	220.5	94.2	43%	6%
12 00	transporti da kavSirgabmul oba	3 646.2	212.9	95.5	45%	3%
13 00	ek. saqm. dakavSirebul i sxva momsaxureba	4 201.2	937.7	463.9	49%	11%
14 00	xarj ebi, romel ic ar ganekuTvneba ZiriTad ganyofil ebebs	343 906.5	67 040.6	71 029.3	106%	21%
	<b>sul</b>	<b>1 202 260</b>	<b>256 204.2</b>	<b>205 895</b>	<b>80%</b>	<b>17%</b>



## 2.3 central uri biuj etis xarj ebi organizaciul i kl asifikaciis mi xedvi T

rodesac saqarTvel os mTavrobam biuj etSi saerTaSoriso safinanso institutebis mier rekomendebul i **ekonomikuri ganviTarebisa da siRaribis Sencirebis programa ar daamtkica da Sesabamisad biuj etSi erTi TeTric ar gaiTval iswina** da social uri dargebis dafinansebis mxriv Zal zed arasaxarbiel o mdgomareobaa, **central uri biuj etidan cal keul organizaciebze kvl av gul uxvad gaicema iseTi xarj ebi, rogoricaa mivl inebebi (ZiriTadad qveynis gareT), sxva saqonel i da momsaxureba (ZiriTadad transportisa da teqnikiis Senaxva, rbil i inventaris SeZena da sxva), kapital uri xarj ebi da sxva.**

sabol oo jamSi, **2003 wl is biuj eti gagrZel ebaa im konformistul i xarj viTi politikisa zogierTi sabiuj eto organizaciebis mimarT, rasac mTavroba bol o 10 wl is ganmavl obaSi atarebs** (garda mokl evadiani periodisa 2000-2001 wl ebSi, rodesac saxazino samsaxuridan sabiuj eto organizaciebze xarj ebi Tanabrad da proporciul ad nawil deboda). **kvL av arseboben priviligirebul i sabiuj eto organizaciebi,** rogoricaa parl amenti, saxel mwifo kancel aria, sagareo saqmeTa saministro, Sss da a. S. roml ebsac miuxedavad imisa gaicema Tu ara l tol vil Ta Semweobebi an umweo mdgomareobaSi myof oj axTa social uri daxmarebis programa, mainc daufinansdebaT mivl inebebi, transportis xarj ebi da sxva msgavsi muxl ebi. **amave dros mxol od xel fasi da anaricxebi ufinansdebaT iseT "daCagrul " organizaciebs,** rogoricaa: saqarTvel os MmSenebl obisa da urbanizaciis saministro, saqarTvel os geol ogiis saxel mwifo departamentis aparati, saqarTvel os informatizaciis saxel mwifo departamenti, standartizaciis, metrol ogiisa da serTifikaciis saxel mwifo departamenti da sxva.

#9 cxril Si mocemul ia im xarj ebis nawil i, roml ebic **sabiuj eto probl emebis fonze prioritetul ad ar migvaCnia, magram gaweul i iqna l kvartal Si. sainteresoa, rom zemoaRniSnul i xarj ebis j amma ზ,9 ml n l arze meti Seadgina.**

**cxril i #9. zogierTi sabiuj eto erTeul is xarj ebi 2003 wl is l kvartal Si**

(aTas l arebSi)

<b>kodi</b>	<b>organizaciis dasaxel eba</b>	<b>Tanxa</b>	<b>xarj is dasaxel eba</b>
01 01	saqarTvel os parl amenti	172.8	mivl inebebi
		724.4	sxva saq. da moms.
03 00	saqarTvel os kontrol is pal ata	18 35	kap. xarj i mivl inebebi
		30	sxva saq. da moms.
04 00	saqarTvel os sakonstitucio sasamarTl o	23.5	sxva saq. da moms.

07 00	saqarTvel os iusticiis sabWo	21.6	sxva saq. da moms.
08 00	saqarTvel os saxel mwifo kancel aria	363,1	mi vl inebebi
19 00	saqarTvel os ganaTl ebis saministro	17.5	kapital uri xarj ebi <sup>1</sup>
23 00	saqarTvel os Tavdacvis saministro	2 357.5	sxva saq. da moms. (kvebis xarj ebis gamokl ebi T)
24 00	saqarTvel os iusticiis saministro	522	sxva saq. da moms. (kvebis xarj ebis gamokl ebi T)
2701	saqarTvel os sagareo saqmeTa saministros aparati	204.8	mi vl inebebi
28 00	saqarTvel os saTbob-energetikis saministro	209.1 17 123,5	sxva saq. da moms. subsidi ebi da mi md. transferebi
29 00	saqarTvel os saxel mwifo uSiSroebis saministro	285.8	sxva saq. da moms. (kvebis xarj ebis gamokl ebi T)
		40	kapital uri xarj ebi
31 04 04	epizootiis RonisZiebebi	1 000	sxva saq. da moms.
33 01	transportisa da komuni kaciebis saministros aparati	67	kapital uri xarj i
37 01	Sss central uri aparati	79.4	mi vl inebebi
		1 956.5	sxva saq. da moms. (kvebis xarj ebis gamokl ebi T)
42 00	dazvervis saxel mwifo departamenti	120.3	sxva saq. da moms. (kvebis xarj ebis gamokl ebi T)
		10.9	kapital uri xarj ebi
49 00	saxel mwifo sazRvris dacvis saxel mwifo departamenti	165.8	sxva saq. da moms. (kvebis xarj ebis gamokl ebi T)

<sup>1</sup> aRsaniSnavia, rom ganaTl ebis saministrosaTvis kapital uri xarji gacemul i iqna wina periodSi warmoqmnili daval ianebebis dafarvis mizniT. Sedegad, **dairRva saqarTvel os kanoni "2003 wl is saxel mwifo biujetis Sesaxeb"**, roml is me-15 muxl is mixedviT wina periodSi warmoqmnili daval ianebebis dafarvis xarjebisaTvis saqarTvel os central uri biujetidan gamoyofil i asignebebidan mxol od dacul i muxl ebi unda dafinansdes.

56 00	saxel mwifo uzrunvel yofis samsaxuri	9.8	mi vl ine ba
		361.3	sxva saq. da moms.
		241.9	subsi diebi da mimd. transferi
57 00	saxel mwifo dacvis special uri samsaxuri	16.5	mi vl ine bebi
		337.4	sxva saq. da moms. (kvebis xarj ebi miTiTebul i ar aris)
61 00	saqarTvel os prokuratura	37.9	sxva saq. da moms.
68 00	saxel mwifo universitetebi	398.7	sxva saq. da moms. (kvebis xarj ebi gamokl ebiT)
<b>sul</b>		<b>26,952</b>	

kv l av gadauWrel probl emad rCeba biuj etis kl asifikatoris daxvewisa da xarj ebi s gamWvirval obis sakiTxi. **ar iSiFreba zogierTi organizaciis da sabiujeto programis xarj ebi muxl ebi.** magal iTad, "sxva saqonel isa da momsaxurebis muxl iT" **1 ml n l aria gaxarj ul i** epizootiis xarj ebze (organizaciul i kodi 31 04 04), "subsi diebisa da mimdinare transferis" muxl iT **2 ml n l arze meti Tanxaa gacemul i** saqarTvel os tel eviziis xarj ebze (66 00) da a. S aseve gamsxvil ebul i muxl ebiT aris Sedgenil i sagzao fondis xarj ebi, saidanac 2003 wl is l kvartal Si **gaxarj ul i iqna 9,4 ml n l ari** (danarTi #3). yovel ive es, garda imisa, rom **arRvevs biuj etis transfarentul obis principebs da badebs eWvebs xarj ebi marTebul obis Sesaxeb,** ar iZl eva saSual ebas srul yofil i anal izi gakeTdes cal keul i muxl ebi s sagegmo parametrebis dagegmvis marTebul obis da faqtobrivad gaweul i xarj ebi s Taobaze.

aseve, 69 00 da 70 00 organizaciul muxl ebidan tradiciul ad **finansdeba sazogadoebrivi organizaciebi (magal iTad, mveral Ta kavSiri) da Jurnal -gazeTebi, romel Ta umravl esoba Tval iT aravis ar unaxavs.**

cal ke saubris Tema saqarTvel os saxel mwifo sarezervo fondidan gaweul i xarj ebi (ix. danarTi #4). 2003 wl is l kvartal Si **sarezervo fondidan, wina wl ebi s gamocdil ebi s msgavsad, ZiriTadad saxel mwifo biurokratiis mi vl ine bebia dafinansebul i, rac rogorc kanonmdebl obis, ise moral uri Tval sazrisiT yovl ad gaumarTI ebl ad migvaCnia.** 633 aTasi l aridan mxol od 150 aTasi l aria gamoyofil i i. maCabl is saxel obis muzeumis aRsadgenad, danarCeni 483 aTasi ki iseT mi vl ine bebz ea gaxarj ul i, rogoricaa saxel mwifo kancel ariis warmomadgenel Ta mi vl ine ba SveicariaSi, q. ivanovo-frankovskSi, sazRvris dacvis saxel mwifo departamentis warmomadgenl is (warmomadgenel Ta) mi vl ine ba q. parizSi da sxva.

saxel mwifo sarezerwo fondidan qveynis gareT miwl inebebisaTvis Tanxebis gacema xdeboda saqarTvel os prezidentis 23.02.01 w. #67 brZanebul ebis safuZvel ze. Tumca, zemoaRniSnul i brZanebul eba konkretul ad mxol od 2001 wl is saxel mwifo biuj etSi Cadebul i sarezerwo fondidan iTval iswinebda miwl inebis Tanxebis gamoyofas. amasTan, "sabiuj eto sistemebisa da ufl ebamosil ebaTa Sesaxeb" saqarTvel os kanonSi ar aris ganmartebul i saxel mwifo sarezerwo fondis funqciebi da ar aris dafiqshirebul i fondidan gasaweви xarj ebis CamonaTval i. miuxedavad amisa, bunebrivia, rom sarezerwo fondis funqcia unda iyos qveyanaSi iseTi gadaudebel i da sagangebo xarj ebis dafinanseba, rogoricaa, magal iTad erovnul i masStabis sagangebo SemTxvevebi, katastrofebi, gauTval iswinebel i saxel mwifo val debul ebebi da sxva. yovel ive zemoaRniSnul idan gamomdinare, **saxel mwifo sarezerwo fondidan miwl inebebis dafinansebas aranairi samarTI ebrivi safuZvel i ar gaaCnia**

sazogadoebrivi da kerZo sakuTrebis cnebebis aRrevis Temas mi vyavarT sabiuj eto organizaciebis specsaxsrebis sakiTxTan. **yovel Tvis musirebda azri imis Sesaxeb, rom specsaxsrebi sabiuj eto organizaciebis "sakuTrebas" warmoadgenda da isini (ufro zustad - am organizaciebis xel mZRvanel ebi) sakuTari nebasurvil iT unda xarj avdnen am saxsrebs.** sabiuj eto organizaciisaTvis saWi roa specsaxsrebis xarj TaRricxvis formal urad SeTanxmeba finansTa saminstrosTan, rac aranair probl emas ar warmoadgens da SemdgomSi igi Tavisufl ad ganagebs aRniSnul saxsrebs. aq kvl av mental itetTan dakavSirebul probl emebTan gvaqvs saqme. Zal zed rTul ad esmis zogierTi saminstros, departamentis an sxva sabiuj eto organizaciebis xel mZRvanel obas, rom **es aris ara maTi sakuTari da memkvidreobiT miRebul i Tanxebi, aramed saxel mwifos mier del egirebul i ufl ebebis gamoyenobis Sedegad gaweul i garkveul i momsaxurebis safasuri, rac aseve saxel mwifo sakuTrebas warmoadgens.**

zemoaRniSnul is Tval saCino dadasturebaa cxril i #10. 2003 wl is I kvartal Si daxarj ul i iqna 233 aTasi I ari miwl inebebze, 5 ml n l arze meti sxva saqonel sa da momsaxurebze (umetesad transportisa da teqniki Senaxvis xarj ebi), xol o 960 aTasi I ari kapital ur xarj ebze. amasTan, specsaxsrebis angariSebidan muSa-mosamsaxureTa Sromis anazRaureba da damqiravebl idan anaricxebi ZiriTadad finansTa saminstros sistemis muSakebze modis.

**cxril i #10. saqarTvel os 2003 wl is I kv-is central uri biuj etis specsaxsrebis xarj ebis Sesrul eba ekonomikuri kl asifikaciis mixedviT**  
(aTas I arebSi)

xarj ebi	wl is gegma	I kv-is gegma	I kv-is Sesrul eba	%	
				kvartal Tan Sefardeba	wel Tan Sefardeba
muSa-mosamsaxureTa Sromis anazRaureba	48,016.1	30,311.9	5,385.9	18%	11%
m. S. finansTa saminstro (35 00)		19,003.8	3,366.5		

<b>damqiraveblidan anaricxebi</b>	13,432.7	7,786.6	1,483.7	19%	11%
m. S. finansTa saminstro (35 00)		5,892.7	1,211.6		
<b>mivlinebebi</b>	3,427.4	2,269.2	233.1	10%	7%
<b>sxvasaqoneli da momsaxureba</b>	51,237.3	29,642.3	5011.1	17%	10%
<b>subsidiebi da mimdinare transferebi</b>	3,846.8	3,316.6	701	21%	18%
<b>kapitaluri xarjebi</b>	15,299.7	10,368.2	960	9%	6%
<b>izul ebit Camowrili Tanxebi</b>	0.0	0	119.4		
<b>sul</b>	<b>135,260.0</b>	<b>83,694.8</b>	<b>13,894.2</b>	<b>17%</b>	<b>10%</b>

vfiqrobT, sazogadoeba unda gaaqtiurdes saxel mwifo biujetis xarjebis monitoringis procesSi, raTa zemoarhisnuli gaumartebel i xarjebis wili minimumamde iqnes dayvanili. unda Camoyal ibdes iseti saxel mwifoebri azrovneba, romelic saxel mwifo moxel es miaxvedrebs, rom biujetis xarjebis gaweva xdeba mteli sazogodobis mier akumulirebuli Tanxebis xarjeze da isini sazogodobisadmi angarisvaldebulni arian biujetidan gaweuli yoveli TeTris xarjvaze.

**saparlamento arcevnobis moaxloebastan erTad, aucil ebl ad migvacnia, sazogodobri monitoringis masstabebis gazrda biujetis rogorc Semosavlebis, ise xarjebis mimart, vinaidan samwuxaro gamocdilebis mixedvit, arcevnobis saqartvel oSi yovel Tvis Tan sdevda Semosavlebis Semcireba da saellvo, araefqturi xarjebi. Cveni devizia: "biujeti da mTI ianad ekonomika politiki garese".**

### 3. social uri sferos dafinanseba central uri biuj etidan

saxel mwifo biuj etSi social ur sferos uaRresad didi mniSvnel oba eniWeba. am sferos gansakuTrebul i roli mkafiod aris gancxadebul i kanonSi "saqarTvel os 2003 wl is saxel mwifo biuj etis Sesaxeb". kanonis 27-e muxl i gamoyofs sferoebis, roml ebic "dacul muxl ebad" moiazreba da romel Ta Sesrul ebsac xel isufleba Tavis uwinares prioritetad miCnevs. saxel mwifo xarjebi ganaTI ebaze, jandacvaze, social ur daxmarebebsa da pensiebze (zogierT sxva xarj Tan erTad) swored dacul muxl ebSi aris gaerTianebul i. aqedan gamomdinare, **biuj etidan social uri sferos dafinansebas gansakuTrebul i yuradReba unda daeTmos.**

#### 3.1. central uri biuj etis xarjebi social ur sferoze funqcional uri kl asifikaciis mixedviT

biuj etis xarj viT nawil Si qveynis social uri val debul ebebi sam ZiriTad funqcional ur jgufSia gaerTianebul i. esenia: ganaTI eba (funqcional uri kodi 04 00), jandacva (05 00) da social uri dazRveva da socuzrunvel yofa (06 00). 2003 wl is I kvartl is xarjebis gegmis mixedviT, es sami kategoria central uri biuj etis xarj viTi nawil is 22%-s Seadgens, xol o faqtobrivi Sesrul ebis mxriv - biuj etis xarjebis 16%-s. es wil obrivi Semadgenl oba faqtobrivad SenarCunebul ia ukanasknel i wl ebis ganmavl obaSi, sadac 2001 wel s central uri biuj etis dagegmil i jamuri xarji social ur sferoze (ganaTI eba, jandacva, social uri dazRveva da socuzrunvel yofa) 24%-s, xol o Sesrul eba 23%-s Seadgens, 2002 wel s ki Sesabamisad -- 21% da 21% (detal uri informacia ix. cxril Si # 11).

#### cxril i #11. central uri biuj etis xarjebi I arebSi funqcional uri kodebis mixedviT

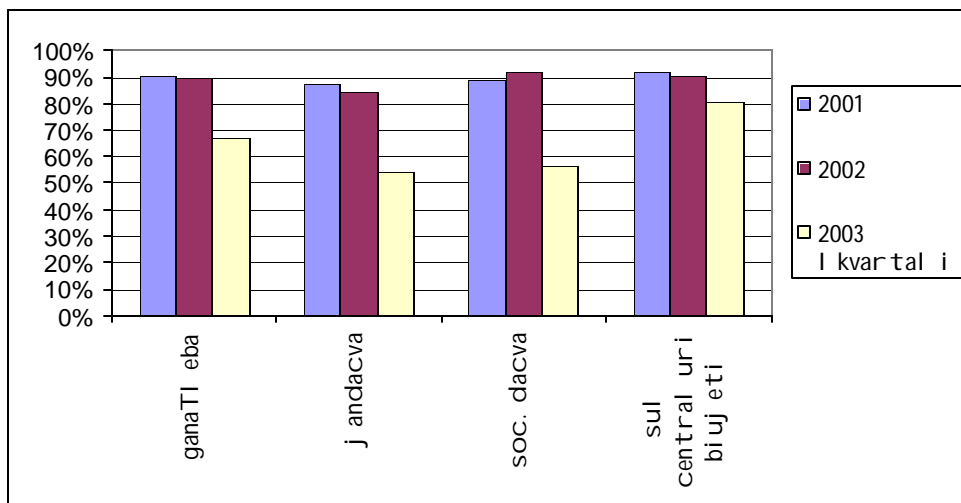
(I arebSi)

<i>Funq. kodi</i>	<i>ekonomikuri kategoria</i>	2001	2002	2003 I kvartali
04 00	g a n a T I e b a	34,848,055	41,369,923.5	13,693,246
	sakaso xarj i	31,461,729	37,021,977.5	9,160,128
	gadaxra	-3,386,326	-4,347,946.0	-4,533,118
	<b>Sesrul ebis procenti</b>	<b>90%</b>	<b>89%</b>	<b>67%</b>
	wil i biuj etidan (gegma)	4%	4%	5%
	wil i biuj etidan (Sesr)	4%	4%	4%
05 00	j anmrTel obis dacva	37,881,278	47,290,824.9	2,657,662
	sakaso xarj i	33,037,181	39,849,951.1	1,430,642
	gadaxra	-4,844,097	-7,440,873.9	-1,227,020
	<b>Sesrul ebis procenti</b>	<b>87%</b>	<b>84%</b>	<b>54%</b>
	wil i biuj etidan (gegma)	5%	5%	1%
	wil i biuj etidan (Sesr)	4%	5%	1%

06 00	social uri dazRveva da socuzrunvel yofa	122,967,266	120,684,896.9	39,755,414
	sakaso xarj i	109,413,702	110,671,129.1	22,316,223
	gadaxra	-13,553,564	-10,013,767.8	-17,439,191
	<b>Sesrul ebis procenti</b>	<b>89%</b>	<b>92%</b>	<b>56%</b>
	wil i biuj etidan (gegma)	15%	13%	16%
	wil i biuj etidan (Sesr)	15%	13%	11%
	<i>sul central uri biuj eti</i>	813,846,600	955,742,880.9	256,204,100
	sul sakaso xarj ebi	750,650,719	862,661,450.0	205,895,107
	<i>sxvaoba</i>	-63,195,881	-93,081,430.9	50,308,993
	Sesrul ebis procenti	92%	90%	80%

social ur sferoze xarjebis dagegmvasa da Sesrul ebas Soris sxvaoba, an gegmis Sesrul ebis procenti aseve gvaZl evs garkveul i daskvnebis gakeTebis saSual ebas. ukanasknel i ori wl is ganmavl obaSi central uri biujetis jamuri xarjebis Sesrul ebis procenti umniSvel od aRemateba misi social uri nawil is Sesrul ebis procentis, zogjer ki mcired CamorCeba kidec. magal iTad, Tu 2001 wel s central uri biujetis xarjebi jamurad 92%-iT Sesrul da, ganaTI ebaze dagegmil i xarjebis 90% daifara, j andacvaze - 87%-iT da soc.dazRvevasa da uzrunvel yofaze - 89%-iT. 2002 wel s msgavsi suraTia, im gansxvavebiT, rom Sesrul ebis procenti social ur dazRvevasa da uzrunvel yofaze (92%) aRemateba biujetis jamuri xarjebis Sesrul ebis procentis (90%) (ix. cxrili #11 da diagrama #3). es procentul i maCvenebl ebi metyvel ebs imaze, rom social uri sfero prioritetul ad aris miCneul i da misi gegmis Sesrul ebas central uri xel isufl eba Tavis mniSvel ovan funqciad miCnevs. Tumca, is faqti, rom **dacul muxl ebSi gaertianebul i xarjebi arasaTanadod finansdeba, anu saxel mwifo Tavis uwinares val debul ebebs bol omde ver asrul ebs, gansakuTrebul i aRniSvnisa da dafiqrebis Rirsia.**

**diagrama #3. central uri biujetis xarjebis Sesrul eba zogierTi funqcional uri kategoriis mixedviT**



2003 wl is I kvartl is xarjebis anal izi gansxvavebul suraTs gvixatavs. aq **biuj etis gegma 80%-iTaa Sestrul ebul i, xol o ganaTI ebaze dagegmil i xarjebis mxol od 67% daixarja, j andacvaze -- 54% da social ur dazRvevasa da uzrunvel yofaze -- 54%. aseTi gansxvaveba naTI ad metyvel ebs, rom 2003 wl is pirvel kvartal Si social uri sfero garkveul ad "daCagrul ia"** da xarjebi sxva funqcional ur kategoriebze aris gadanawil ebul i. Tumca erTi kvartl is anal izi ar gvaZl evs saSual ebas visaubroT central uri biuj etis prioritetebis cvl il ebaze social uri sferos saZianod. srul yofil i daskvnisaTvis ufro xangrZl ivi dakvirveba iqneba saWiro.

dasafiqrebel ia agreTve Semdegi garemoebac. Tu 2003 wl is pirvel i kvartl is gegmas wl iur gegmas SevadarebT, Semdeg suraTs davinaxavT: pirvel i kvartl is dagegmil i xarjebi ganaTI ebaze wl iuri xarjebis 17.7%-s Seadgens, j andacvaze ki – mxol od 4.8%-s. (maSin, roca, central uri biuj etis kvartl is gegma wl iuris 21%-ia. (ix. cxril i #12) aq Sesazl oa visaubroT araracional ur dagegmarebaze, gansakuTrebiT j andacvis sferoSi. saintereso iqneba dakvirveba, Tu rogor Sestrul deba wl iuri da/an Semdgomi kvartl ebis gegmebi aseTi araTanabari dagegmvis pirobebSi.

### **cxril i #2. 2003 wl is I kvartl is wil i wl iur biuj etSi**

(aTasi l ari)

<i>Funq. kodi</i>	<i>ekonomikuri kategoria</i>	<b>2003 wl is gegma</b>	<b>2003 I kvartal i</b>	<b>% wl is gegmis</b>
04 00	g a n a T I e b a	77,396.3	13,693	17.7%
05 00	j anmrTel obis dacva	54,835.5	2,658	4.8%
06 00	social uri dazRveva da socuzrunvel yofa	108,036.8	39,755	36.8%
	<b>sul central uri biuj eti</b>	<b>1,202,260.0</b>	<b>256,204</b>	<b>21.3%</b>

### **3.2. ganaTI eba**

ganaTI ebis saminstros xarjebis anal izi central uri biuj etis struqturaSi saintereso damatebiT informacias izl eva. Tumca Cven vacnobierebT, rom es monacemebi srul ad ar asaxavs saxel mwifos val debul ebebs ganaTI ebis sferos mimarT, vinaidan bevri saswavl o dawesebul eba adgil obrivi biuj etebidan finansdeba.

**2001 da 2002 wl ebis ganmavl obaSi ganaTI ebis saminstro dagegmil xarjebis TiTqmis srul ad Rebul obda (Sesabamisad 96% da 97%).** aRsaniSnavia, rom central uri biuj etis srul i Sestrul ebis procenti (92% da 90%) nakl ebia ganaTI ebis saminstroze dagegmil i xarjebis Sestrul ebis procentze, rac isev da isev ganaTI ebis (amj erad, ganaTI ebis saminstros) prioritetul obaze metyvel ebs. Tumca, aseve sayuradReboa, rom **2003 wl is I kvartal Si ganaTI ebis saminstros xarjebis Sestrul ebis procenti mxol od 54%-ia** (ix. cxril i #13).



**cxril i #13. central uri biuj etis xarj ebi ganaTI ebis saministroze**

(I arebSi)

<i>org. kodi</i>	<i>dasaxel eba</i>	2001	2002	2003 I kvartal i
19 00	ganaTI ebis saministro	13,732,800	13,732,800	4,237,147
	Sesrul eba	13,157,416	13,265,754.0	2,269,268
	sxvaoba	575,384	467,046	1,967,879
	<b>Sesrul ebis procenti</b>	<b>96%</b>	<b>97%</b>	<b>54%</b>
	wil i biuj etidan (gegma)	2%	1%	2%
	wil i biuj etidan (Sesrul )	2%	2%	1%
19 13 19 14 19 15	(m. S.) saministros miznobrivi programebi	2,320,500	2,320,500	677,527
	Sesrul eba	2226597.00	1,807,030	82,109.39
	sxvaoba	93903.00	513,470	595,417.61
	<b>Sesrul ebis procenti</b>	<b>96%</b>	<b>78%</b>	<b>12%</b>
	wil i biuj etidan (gegma)	17%	17%	16%
	wil i biuj etidan (Sesrul )	17%	14%	4%
	<i>sul central uri biuj eti</i>	813,846,600	955,742,880.9	256,204,100
	Sesrul eba	750,650,719	862,661,450.0	205,895,107
	sxvaoba	-63,195,881	-93,081,430.9	50,308,993
	<b>Sesrul ebis procenti</b>	<b>92%</b>	<b>90%</b>	<b>80%</b>

Tu detal urad SevxedavT ganaTI ebis saministrosaTvis gankuTvnil xarj ebs central uri biuj etidan, SevamCnevT, rom misi ZiriTadi nawili sxvadasxa tipis saswavo dawesebul ebebze nawil deba. damatebiT, ganaTI ebis saministros biuj etSi gamoyofil ia Tanxebi sxvadasxa miznobrivi programebis Sesasrul ebl ad. ukanasknel i wl ebis ganmavlobaSi es programebi ar icvl eba. maTi zogadi CamonaTval i Semdegia: ganaTI ebis saministros miznobrivi programebi ganaTI ebis sistemis reformis realizaciaze, qarTuli enis saganmanaTli ebl o programa, arasrul wlovanTa dacvis, ganvitarebisa da sazogadoebasTan adaptaciis programa, sazRvargareT qarTuli skol ebisatvis daxmarebis programa, obol da mSobel Tamzrunvel obas moklebul bavSvTa saxlebis, skola-internatebis da gansakuTrebuli rejimis bagabarebisa da skola-internatebis daxmarebis al ternatiuli formebis programa, saerTasoris saganmanaTli ebl o programebis Tanadafinanseba. es programebi stabil urad ganaTI ebis saministros biuj etis 16-17% Seadgens gegmis mixedvit da 2001-2002 wl ebis ganmavlobaSi TiTqmis aseve srul deba. kvl av **sayuradReboa, rom amawlis pirvel kvartal Si ganaTI ebis programebis dagegmil i 677,527.00 l aridan mxol od 82,109.39 l ari (dagegmil is 12%) daixarja. wina wl ebSi Sesrul ebis procenti 96% da 78% Seadgenda.** agreTve,

aRsanisnavia, rom wina wl ebSi zogierTi programa gadaWarbebiTac ki Sestrul da (mag. 2002 wel s organizaciul i kodebi 19 13 01 da 19 13 02).

### 3.3. j andacva

j andacvis sferos gaanal izebisas gansakuTrebiT sayuradReboa j andacvis saxel mwifo programebi. 1994 wl idan j andacvis programebis xarj ebze dakvirveba saSual ebas gvaZl evs ukanasknel i wl ebis dinamikas gavadevnoT Tval i. garda imisa, rom SeiniSneba xarj ebis mudmivi zrdis tendencia rogorc dagegmil i, aseve real urad gaRebul i xarj ebis Tval sazrisiT, izrdeba agreTve gegmis Sestrul ebis procentic. Tumca, 1996 wl is rekordul 91.2%-s gegmis Sestrul ebis procentma j er ver miaRwia (ix. cxril i #14 da diagrama #4).

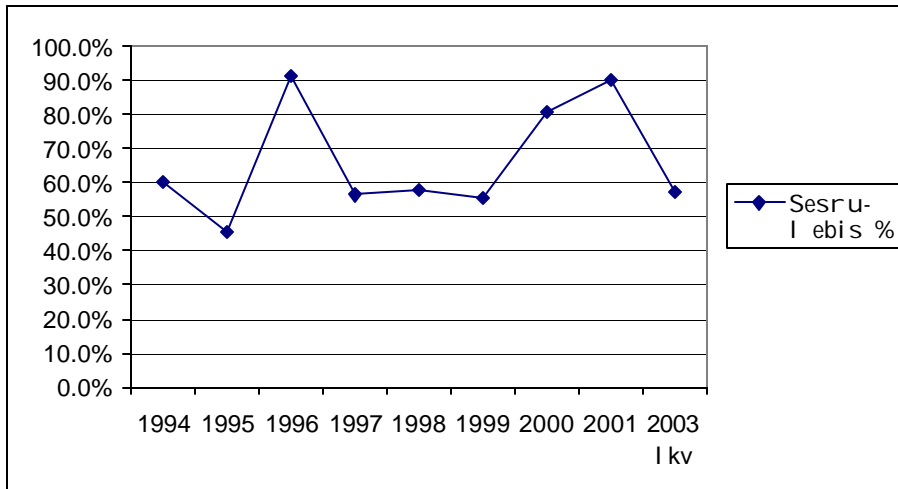
#### cxril i #14. biuj eturi xarj ebi j andacvis programebze

(aTasi l ari)

	gegma	faqtobrivi	Sesru- l ebis %	gadaxra
<b>1994</b>	1901.2	1145.9	60.3%	-755.3
<b>1995</b>	18700	8534	45.6%	-10166
<b>1996</b>	21494	19593.1	91.2%	-1900.9
<b>1997</b>	49313	27836.6	56.4%	-21476.4
<b>1998</b>	54220	31474	58.0%	-22746
<b>1999</b>	52800	29200	55.3%	-23600
<b>2000</b>	48000	38820	80.9%	-9180
<b>2001</b>	58200	52500	90.2%	-5700
<b>2003 I kv</b>	21640	12412.55	57.4%	-9227.45

j andacvis programebze xarj ebis **real uri Sestrul ebis procenti 2003 wl is I kvartal Si dramatul ad ecema 57.4%-mde.** aq, j andacvis programebi sam ZiriTad j gufad iyofa: ambul atoriul i da stacionarul i daxmarebis programebi da mosaxl eobis specifikuri medikamentebiT uzrunvel yofis programa.

**diagrama #4. j andacvis saxel mwifo programebis dafinanseba**



j andacvis sami ZiriTadi programidan, yvel aze ukeT dafinansda specifikuri medikamentebiT uzrunvel yofis programa (64.7%), yvel aze sustad ki -- mosaxl eobis ambul atoriul i daxmarebis programa (52%) (ix. cxril #15)

cxril i #15. j andacvis saxel wifo programebis dafinanseba 2003 wl is I kvartal Si

(aTasi I ari)

	gegma	faqti	sxvaoba	Ses. %
mosaxl eobis ambul atoriul i daxmarebis programa	3435	1785	1650	52.0%
mosaxl eobis stacionarul i daxmarebis programa	13083	7314.96	5768.04	55.9%
mosaxl eobis specifikuri medikamentebiT uzrunvel yofis programa	5122	3312.5	1809.5	64.7%
<b>sul</b>	<b>21640</b>	<b>12412.46</b>	<b>9227.54</b>	<b>57.4%</b>

2003 wl is I kvartl is biuj etSi j andacvasa da ganaTI ebaze gaweul i xarj ebis anal izi saSual ebas gvaZl evs visaubroT saSiS tendenciaze, romelic gamoixateba dagegmil i xarj ebis Seusrul ebl obiT (an ufro zustad, susti Sesrul ebiT) wina wl ebTan SedarebiT. rogorc aRiniSna, mxol od erTi kvartl is monacemebi ar izl eva sagangaSo daskvnebis gakeTebis saSual ebas, magram sayuradReboa erTi mniSvnel ovani garemoeba: saqarTvel os erT-erT umniSvnel ovanes strategiul dokumentSi -- **“saqarTvel oSi ekonomikuri ganvitarebisa da siRaribis Sencirebis programa”** -- adamanuri kapital i ganxil eba, rogorc siRaribis daZl evis erT-erTi umniSvnel ovanesi resursi. **swored ganaTI ebul i da j anmrTel i adaminebi moiazreba im kritikul**

*Zal ad, romel ic qveynis momaval keTil dReobas uzrunvel yofs. Tu Cvens mier amJamad dafiqsirebul i tendencia gagrZel deba, es, udavod, adamanuri kapital is dakninebas gamoiwvevs. swored im kapital isa, romel mac unda ganapirobos saqarTvel os mdgradi ganviTareba da misi moqal aqeTa keTil dReoba.*

### 3.4. saqarTvel os social uri dazRvevis erTiani saxel mwifo fondi

2003 wl is I kvartli is ganmavl obaSi saqarTvel os social uri dazRvevis erTiani saxel mwifo fondis (SemdgomSi *fondis*) muSaobis gasaanal izebl ad unda SevxedoT misi rogorc saSemosavl o, aseve xarj viT nawil s. ***fondis Semosavl ebi dagegmil i 86.4 milionidan mxol od 66.3 milioniT, anu dagegmil is 77%-iT Seivso.*** fondis dafinansebis wyaroTagan mniSvnel ovani wvli i fondis SevsebaSi ekuTvnis iuridiul i pirebis da moqal aqeebis gadasaxadebsa da transfers saqarTvel os central uri biuj etidan. yuradsaRebia, rom iuridiul i pirebis da moqal aqeTa gadasaxadebi TiTqmis mTlianad (ufro zustad ki 92%) iqna amoRebul i, maSin roca ***dagegmil i transferis mxol od 45% Semovida fondis angariSze.*** sayuradReboa isic, rom teritoriul i erTeul ebis biuj etidan gadmocemul i Tanxebis (dagegmil i 1 milion i) 90% Semovida fondis biuj etSi.

fondis xarjebis anal izisas gansakuTrebul yuradRebas ipyobs pensionerebis pensiebi, umuSevarTa daxmareba da j andacvis programebi. am ukanasknel ze ukve visaubreT, axl a yuradRebas pensionerebsa da umuSevrebze SevaCerebT.

#### **pensiebi**

pensiebi fondis xarjebis mniSvnel ovan wvli s Seadgens. ***pirvel kvartal Si dagegmil i pensiebis 73% gaica (ix. cxril i #16) da wina periodis daval ianebis mxol od 44% daifara.*** amasTan, ukanasknel i wlebis ganmavl obaSi jamuri pensiebi damakmayofil ebl ad gaicemoda (saSual od dagegmil is 90% bol o sami wl is ganmavl obaSi). ama wl is pirvel i kvartli is es monacemic uaresia wina wl ebTan SedarebiT. kidev erTxel avRniSnavT aseve im Seusabamobas, romel ic pensiebis, rogorc dacul i muxl is, gacemis gansakuTrebul rejimsa da am xarjis arasrul fasovan Sesrul ebas Soris arsebobs. es, Cveni azriT, dasafiqrebel i probl ema da pirdapiri kanondarRvevaa.

#### **cxril i #16. pensionerTa pensiebis xarjebi**

(aTasi l ari)

	2000	2001	2002	2003 I kvar
gegma	176,389	197,831	204,436	53,788
Sesrul eba	157,423	181,134	187,907	39,489
Sesrul ebis %	89%	92%	92%	73%

**umuSevarTa daxmareba:**

umuSevarTa social uri dacvis da dasaqmebis xel Sewyobis programa ramodenime komponents moicavs. jamurad, ama wl is **pirvel kvartal Si programis aRsrul ebis dagegmil i 1.95 mil ion i l aridan real urad daixarja mxol od 0,5 ml n l ari, anu dagegmil is 25%**. Tu programis struqturas ufro CavuRrmavdebiT, aRmoCndeba, rom programis fargl ebSi dafinansda mxol od umuSevrebis Semweobebi (gegma Sesrul da 77%-iT) da nawil obriv daifara gasul i wl is daval ianeba (dagegmil is 65%-iT). programis sxva komponentebi, rogorcaa **umuSevrebis droebiTi dasaqmebis, umuSevrebis dasaqmebis da umuSevrebis profesiul i momzadebisa da gadamzadebis programebi saerTod ar dafinansebul a.** dagegmil i xarji am programebze 1.2 mil ions, anu saerTo programis gegmis 61.5 % Seadgens. **aRsanisnavia, rom dafinansebis gareSe darCa swored is programebi, roml ebic "dasaqmebis aqtiuri pol itikis" konteqstSi ganxil eba. aseTi pol itika ki ekonomikuri ganvitarebis da siRaribis Sencirebis dokumentSi adamanuri kapital is da SromiTi bazris ganvitarebis erT-erT iaraRad ganxil eba.** Tumca aqve unda davZinoT, rom msofi io praqtikam aCvena "dasaqmebis aqtiuri pol itikis" saeWvo Sedegebi; sadReisod, dasavl uri qveynebi mzardi skepticismiT ganxil aven am pol itikas, rogorc araefeqtur iaraRs umuSevrobis daZl evisa da SromiTi bazris ganvitarebisatvis.

social uri sferos sxvadasxva komponents anal izi cal saxa daskvnis gakeTebis saSual ebas iZl eva: 2003 wl is I kvartl Si dagegmil i xarjebi metad SezRudul ad daixarja. wina wl ebis xarjebTan Sedarebisas Cans, rom gegmis Sesrul ebis procenti, romelic aqamsul izrdeboda, am kvartal Si mniSvnel ovnad CamorCeba wina wl is monacemebis. vimeorebT, rom es tendencia dasafiqrebel ia, Tumca arasagangaSo, Tu igi droebiTi movl ena aRmoCndeba. biuj etis xarjebis Semdegi Tveebis da kvartl ebis Sesrul ebis anal izi mogvcems saSual ebas meti damajerebl obiT visaubroT im safrTxebsa Tu probl emebze, roml ebic 2003 wl is I kvartl is anal izma gamoavl ina.

aRniSnul i tendencia gansakuTrebiT dasafiqrebel ia dacul muxl ebTan mimarTebsi, anu im xarjebTan, romel Ta 100%-iani gacema mTavrobas kanoniT eval eba. am xarjebis Seusrul ebl oba metad sagangaSo tendenciaa da qveynis gancxadebul i prioritetebis Seusrul ebl obas niSnavs.

**ki dev erTxel SevCerdeT mniSvnel ovan dokumentze "saqarTvel oSi ekonomikuri ganvitarebisa da siRaribis Sencirebis programa".** es dokumenti, romelic xel isufl ebis ZiriTad samoqmedo orientirad unda iqces, jer ar aris bol omde miRebul i da dakanonebul i. Sesabamisad, masSi gancxadebul i prioritetebi da moqmedebis orientirebi jer ver CaiTvl eba xel isufl ebis oficial ur strategiad. aRniSnul strategiul dokumentSi qveynis social ur mowyobasa da xel isufl ebis social ur val debul ebebze dawvril ebiT aris saubari. am dokumentis mixedvit adamanuri kapital is (j anmrTel i, ganaTl ebul i, energiul i da cvl ad garemosTan advil ad adaptirebadi adaminebis) da samoqal aqo

sazogadoebis ganvitarebas xel isufleba gansakutrebulo yuradrebani webs da mas moiazrebs, rogorc umnisvnel ovanes resurss qveynis ganvitarebisatvis. daucvel i social uri jgufebis daxmarebas da mat cartvas qveyanasimmdinare procesebis saqartvel os xel isufleba, am strategiul i dokumentis mixedvit, Tavis Zireul val debulebad ariqvams. is faqti, rom "saqartvel osi ekonomikuri ganvitarebisasi raribis semcirebis strategia" jer ar aris damtkicebuli, garkveul ad aisaxeba saqartvel os 2003 wl is saxel mwifo biujetec. vimedovnebt, rom dokumentis damtkiceba da masi gancxadebuli strategiis xel isuflebis real ur orientirad gadaqceva, social uri sferosadmi saxel mwifos interesebs da val debulebebs kidev ufro gaarmavebs da biujetis kanonsi gancxadebuli "daculi muxlebi" marti ac bol omde daculi da qveynis saketil dReod daxarjuli iqneba.

#### 4. 2003 wl is I kvartl is zugdidis raionul i biujetis monitoringi

##### 4.1. Semosavl ebi

zugdidis raionis 2003 wl is biujetis saSemosavlo nawili ganisazrvra 2 824,5 atasi l arit. mat Soris, sagadasaxado Semosavl ebi \_ 1 398,9 atasi l arit; arasagadasaxado Semosavl ebi \_ 100 atasi l arit; adgil obrivi mosakrebeli \_ 100,6 atasi l arit; miznobrivi transferi central uri biujetid \_ 1 225 atasi l arit.

***gaugebaria dagegmvisas ratom ar iyo gatval iswinebuli wina wli dan gadmoyol ili naSTi 27,9 atasi l aris odenobit*** (ix. cxrili #17-is V striqoni).

##### **cxrili #17. zugdidis raionis 2003 wl is I kvartl is Semosavl ebi**

(l ari)

#	Semosavlebis saxe	wl is gegma	I kvartl is gegma	I kvartl is faqti	%	
					Sefardeba wl is gegmasTan	Sefardeba kvartl is gegmasTan
I	<b>sul sagadasaxado Semosavl ebi</b>	<b>1 398 900</b>	<b>475 200</b>	<b>214 006</b>	<b>15%</b>	<b>45%</b>
1	fizikur pirTasemosavlo gadasaxadi	792 000	248 900	104 991	13%	42%
2	mogebis gadasaxadi	68 900	62 600	16 818	24%	27%
3	miwis gadasaxadi	336 000	110 000	56 910	17%	52%
4	gadasaxadi bunebrivi resursebit sargebl obisatvis	10 000	3 000	309	3%	10%

5	gadasaxadi mavne nivTier ebibi T garemos dabinZurebisaTvis	15 000	3 500	-	0%	0%
6	qonebis gadasaxadi	135 000	36 700	20 031	15%	55%
7	gadasaxadi qonebis gadacemi saTvis	22 000	5 300	4 208	19%	79%
8	adgil obrivi gadasaxadebi	20 000	5 200	10 739	54%	207%
<b>II</b>	<b>adgil obrivi mosakrebl ebi</b>	<b>100 600</b>	<b>12 000</b>	<b>10 085</b>	<b>10%</b>	<b>84%</b>
<b>III</b>	<b>sul arasagadasaxado Semosavl ebi</b>	<b>100 000</b>	<b>18 000</b>	<b>47 424</b>	<b>47%</b>	<b>263%</b>
1	Semosavali privatizaciidan	40 000	3 000	7 650	19%	255%
2	spec. saxsrebi	60 000	15 000	28 852	48%	192%
3	sxva arasagadasaxado Semosavl ebi			10 922		
<b>IV</b>	<b>miznobrivi transferi centraluri biujetidan</b>	<b>1 225 000</b>	<b>503 000</b>	<b>503 000</b>	<b>41%</b>	<b>100%</b>
<b>V</b>	<b>naSTi wl is dasawyisidan</b>			<b>27 881</b>		
	<b>sul Semosavl ebi IVda V punqtebis gareSe</b>	<b>1 599 500</b>	<b>505 200</b>	<b>271 515</b>	<b>17%</b>	<b>54%</b>
	<b>sul Semosavl ebi</b>	<b>2 824 500</b>	<b>1 008 200</b>	<b>802 396</b>	<b>28%</b>	<b>80%</b>

kvartლის გეგმბისა და სესრულების შესახებ ინფორმაცია მოცემულია #17 ცხრილში.

ტოვს ურადრებას სეაქრებტრამდენიმე ფაქტზე.

უარმოდგენილი ცხრილის ანალიზით ნათლად იკვეთება ზუგდიდის რაიონის ბიუჯეტის დაგეგმვაში არსებული პრობლემები. კერძოდ, **მავნე ნივთიერებებიტ გარემოს დაბინჯებისათვის გადასახადის კვარტლის გეგმა (3,5 ათასი ლარი) სესრულებულია 0%-ით, ხოლო სხვა არასაგადასახადო შემოსავლები საერთოდ არ იყო დაგეგმილი და სესრულბა დაახლოებით 11 ათასი ლარია.**

სენებულის შემოსავლების ბაზა რომელიც დაიგვიყოს, ბუნებრივია ვისაუბრებდით მანკერი ადმინისტრირების ფაქტორებზე. თუმცა ასევე შემთხვევაშიც ხდება, რომ დაგეგმვის პრობლემებთან გვაყვს საკმა.

საინტერესოა სესრულების მაკვენებლებიც. სულ შემოსავალი კვარტლის გეგმასთან სეფარდებიტ სესრულებულია 80%-ით, ხოლო ვლის გეგმასთან სეფარდებიტ \_ 28%-ით. უარმოდგენილი მაკვენებლები კმაყოფილების არა, მაგრამ დამსვიდების საფუძველს ნამდვილად იქცევა, რომ არა შემდეგ გარემოება.

სენებულის მაკვენებლების პროცენტული სიდიდის განპირობებს **ცენტრალური ბიუჯეტიდან მიზნობრივ ტრანსფერის** დიდი ოდენობა (როგორც დაგეგმილი, ასევე ფაქტობრივი სესრულბა). იგი **სეადგენს ზუგდიდის რაიონის I კვარტლის სესრულების დაახლოებით 63%-ს.**

გარდა ამისა, **პროცენტული მაკვენებლის აუმი ობესებს დაუგეგმავი, მაგრამ სესრულბაში (ფაქტში) ნაკვენები ნაSTი**, რომელზეც ზევიტ გვყვონდა საუბარი.

სენებულის ორი მაკვენებლის გამოკლებით მივირებტ შემდეგ მაკვენებლებს: **სულ შემოსავალი კვარტლის გეგმასთან სეფარდებიტ სესრულებულია 54%-ით, ხოლო ვლის გეგმასთან სეფარდებიტ \_ 17%-ით.**

*es swored is maCvenebl ebia, roml ebic srul yofil suraTs  
gvaZl even administraciis mier Semosavl ebis mobil izebis  
SesaZl ebl obebze.*



## 4.2. xarj ebi

2003 wl is I kvartl is zugdidis raionul i biuj etis xarj ebi daigegma 1,008.3 aTasi l aris odenobiT, faqtobrivma xarj ma 764.5 aTasi l aris Seadgina, rac gegmis 76%-ia (ix. cxril i #18).

2003 wl is I kvartal Si "ekonomikis dafinansebis" funqcional uri muxl idan gasawevi xarj ebi daigegma 24,4 aTasi l arisT, faqtobrivma xarj ma Seadgina 6,5 aTasi l aris (kvartl is gegmis 27%). aRniSnul i funqcional uri muxl idan ZiriTadad finansdeba sabinao komunal uri meurneoba – gegma 20 aTasi l aris, faqti – 4.8 aTasi l aris.

raionis xarj ebis ZiriTadi nawil i modis social ur\_kul turul i RonisZiebis da programebis dafinansebaze: gegma – 736,4 aTasi l aris, faqti 553 aTasi l aris (gegmis 75%). aRniSnul i muxl idan umTavresad finansdeba: ganaTl eba (ZiriTadad central uri biuj etis transferis xarj ze) – gegma 653 aTasi l aris, faqtobrivma xarj va – 515,3 aTasi l aris (gegmis 79%), kul tura – gegma 25,9 aTasi l aris, faqti – 8,9 aTasi l aris (34%), j andacva – gegma 20 aTasi l aris, faqti – 2,9 aTasi l aris (15%).

samarTal damcavi organoebis Senaxvis xarj ebi (ZiriTadad finansdeba municipal uri policiisa da saxanZro samsaxuris xarj ebi) dagegmil i iyo 5,6 aTasi l arisT, faqtobrivma xarj ma Seadgina 2,7 aTasi l aris (gegmis 77%).

mmarTvel obisa da TviTmmarTvel obis Senaxvis xarj ebi dagegmil i iyo 70,5 aTasi l arisT, faqtobrivma xarj ma Seadgina 54,1 aTasi l aris (77%).

***xarj ebi special uri Semosavl ebidan dagegmil i iyo 15 aTasi l arisT, faqtobrivma xarj ma ki 29,9 aTasi l aris Seadgina, rac kvartl is gegmis 199%-s, xol o wl is gegmis 50%-s Seadgens. aRniSnul i garemoeba kidev erTxel xazs usvavs specsaxsrebis xarj vasTan dakavSirebul probl emas, razec central uri biuj etis xarj ebis monitoringis nawil Sic iyo saubari.***

"sxva xarj ebis" funqcional uri muxl is xarj ebi dagegmil i iyo 154 aTasi l arisT, faqtobrivma xarj ma ki 118 aTasi l aris Seadgina (gegmis 77%). aRniSnul i muxl idan ZiriTadad dafinansda kreditis dafarva da bankisaTvis gadaxdil i procentebi: gegma - 130,5 aTasi l aris, faqti – 112,1 aTasi l aris (85,9%). "sxva xarj ebidan" aseve finansdeba miwis gadasaxadis amkreb inspeqtorTa xarj ebi, axal gazrdul saqmeTa departamentis RonisZiebebi da sxva.

**cxril i #18. 2003 wl is I kvartl is zugdidis raionul i biuj etis xarj ebi funqcional ur Wril Si**

(l arebSi)

#	xarj ebi	2003 wl is gegma	I kvartl is gegma	I kvartl is faqti	%	
					wel Tan Sefard eba	kvarta I Tan Sefard eba
I	ekonomikis dafinanseba	329,000	24,400	6,547	2%	27%
II	sockul turul i RonisZiebis da programebis dafinanseba. m. S.	1,946,900	736,400	553,037	28%	75%

1	ganaTI eba	1,260,300	653,000	515,268	41%	79%
2	kul tura	162,500	25,900	8,883	5%	34%
3	sporti	28,400	7,000	543	2%	8%
4	j andacva	350,000	20,000	2,900	1%	15%
5	mosaxl eobis saxel mwifo social uri daxmarebebi	122,000	30,500	25,443	21%	83%
III	arqivi	9,700	2,400	216	2%	9%
IV	samxedro komisariatebisa da samoqal aqo Tavdacvis xarj ebi	15,000			0%	
V	samarTal damcavi organoebis Senaxvis xarj ebi	20,500	5,600	2,749	13%	49%
VI	mmarTvel obisa da TviTmmarTvel obis Senaxvis xarj ebi	201,200	70,500	54,138	27%	77%
VII	xarj ebi spec. Semosavl ebi dan	60,000	15,000	29,859	50%	199%
VIII	sarezervo fondi	20,000			0%	
IX	sxva xarj ebi	222,000	154,000	117,958	53%	77%
	<b>sul xarj ebi</b>	<b>2,824,300</b>	<b>1,008,300</b>	<b>764,504</b>	<b>27%</b>	<b>76%</b>

amasTan, Cvens xel T arsebul zugdidis raionis 2003 wl is I kvartl is biujetis Sesrul ebis angariSSi xarj ebi ar aris ganweril i ekonomikuri kl asifikaciis mixedviT, rac ar izl eva saSual ebas gaverkveT ramdeni dai xarja Sromis anazRaurebaze, anaricxebze, sxva saqonel ze da momsaxurebaze, kapital ur xarj ebze da a. S.

aqve **unda aRiniSnos saqarTvel os yvel a raionisaTvis saerTo probl ema, romel ic ukavSirdeba adgil obrivi biujetebis rogorc xarj ebi, ise Semosavl ebis aRricxvas.** kerZod, avtonomiuri respubl ikebisa da saqarTvel os sxva teritoriul i erTeul ebis yovel i Tvis biuj etebis angariSebi dgeba saqarTvel os finansTa saministrosa da statistikis saxel mwifo departamentis 2000 wl is 21 martis #30/30 brZanebis mixedviT. aRniSnul i **normatiul i aqti sakmaod moZvel ebul ia da ar pasuxobs Semosavl ebis aRricxvianobisa da xarj ebis transfarentul obis Tanamedrove moTxovnebs.** magal iTad, aRniSnul i brZanebis mixedviT, gansxvavebul i muxl ebiT aRiricxeba mosakrebl ebi da arasagadasaxado Semosavl ebi, rac Tvisobrivad erT kategorias warmoadgens gacil ebiT **seriozul cvl il ebebs salli roebs xarj ebis nawil i.** kerZod, xarj ebis funqcional uri muxl ebi: ekonomikis dafinanseba, arqivi, samxedro komisariatebisa da samoqal aqo Tavdacvis xarj ebi da sxva, srul ad ver asaxavs raionis mier gaweul xarj ebs. raionis konsolidirebul i biujeti unda Sedgebodes TiToeul i TviTmmarTvel obis erTeul is detal uri xarjisagan. sazogadoeba saWi roebs informacias, Tu rogor da raSi ixarj eba sabiujeto asignebebi. **mizanSewonil ad migvaCnia, finansTa saministrosa da sakiTxTan dakavSirebul i sxva uwyebebis mier adgil obrivi biuj etebis**

*Ti Toeul i donisa Tvis Semu Savdes Tvis obrivad axal i kl asifikatori  
da angari Sgebis wesi.*

danar Tebi

danarTi #1 2003 wl is central uri biuj etis xarj ebi ekonomikuri kl asifikaciis mixedviT

x a r j e b i	sul central uri biuj eti				%	
	2003 wl is gegma	I kv-is gegma	xarj i	gadaxra	kvartal Tan Sedarebi T	wl iurTan Sedarebi T
<b>muSa-mosamsaxureTa Sromis anazRaureba</b>	<b>173983,6</b>	<b>33 170,4</b>	<b>21 231,0</b>	<b>11 939,4</b>	64%	12%
<b>damqiravebl idan anaricxebi</b>	<b>36220</b>	<b>8 882,1</b>	<b>7 586,0</b>	<b>1 296,1</b>	85%	21%
<b>mivl inebebi</b>	<b>8510,4</b>	<b>1 573,0</b>	<b>1 098,7</b>	<b>474,3</b>	70%	13%
<b>sxva saqonel i da momsaxureba</b>	<b>261961,5</b>	<b>36 988,0</b>	<b>23 481,3</b>	<b>13 506,7</b>	63%	9%
maT Soris		-	-	-		
ofisi		-	925,20			
komunal uri		-	2 921,60			
transportisa da teqnkis Senaxva		-	2 598,30			
kvebis xarj ebi	20167,8	5 717,00	3 637,00	2 080,00	64%	18%
rbil i inventari da uniforma		-	709,90			
special uri programebis momsaxureba			807,30			
sxva xarj ebi		-	11 860,60	- 11 860,60		
medikamentebi		-	21,50	21,50		
sazRvargareT saqarTvel os dipl omatiuri dawesebul ebebi (warmomadgenl obebi)		6 342,10	4 284,30	2 057,80	68%	
I tol vil Ta Senaxvis xarj ebi		4 252,30	3 842,20	410,10	90%	
danarCeni sxva xarj ebi		-	3 254,10			
j anmrTel obis xel Sewyobis, daavadebaTa prevenciis da epidkontrol is saxel mwifo programa		798,00	360,50	437,50	45%	
social uri sferos institucional uri da funqional uri reformis xel Sewyobis saxel mwifo programa		549,00	119,50	429,50	22%	
<b>procentebis gadaxda</b>	<b>137659,5</b>	<b>42 626,7</b>	<b>47 441,7</b>	<b>- 4 815,0</b>	111%	34%
maT Soris		-	-	-		
sagareo saxel mwifo val debul ebebis momsaxureba		24 176,70	24 174,80	1,90	100%	
saSinao saxel mwifo val debul ebebis momsaxureba	84 659,5	18 450,00	23 266,80	- 4 816,80	126%	27%
<b>subsidiebi da mimdinare transferebi</b>	<b>307601,9</b>	<b>90 299,5</b>	<b>65 123,2</b>	<b>25 176,3</b>	72%	21%

vfs ij hbc		-	-	-		
social uri dazRvevis erTiani saxel mwifo fondisaTvis gadasacemi sapensio transferi		10 818,90	5 700,00	5 118,90		53%
transferi janmTel obis dacvis saxel mwifo programebze		10 909,00	3 000,00	7 909,00		28%
regresul i pensiebi		195,00	130,00	65,00		67%
umweo mdgomareobaSi myof oj axTa social uri daxmarebis programa		3 600,00	2 400,00	1 200,00		67%
transferi SezRudul i SesaZl ebl obebis mqone pirTa adaptaciis xel Sewyobis programebze		1 050,00	682,00	368,00		65%
emigrantTa social uri da samoqal aqo reabil itaciis programis dasafinansebl ad			60,00			
afxazeTis l tol vil inval idTa kavSiris programebis dasafinansebl ad			60,00			
l tol vil Ta Semweobebi		9 891,10	7 207,90	2 683,20		73%
transferi teritoriul i erTeul ebis biuj etebSi		17 141,00	16 433,00	708,00		96%
subsidiebi kul turis dawesebul ebebs		1 025,20	772,40	252,80		75%
saqarTvel os tel evizia da radiomauwebl oba		2 790,00	2 010,50	779,50		72%
saqarTvel os energo sistemis subsidireba		17 450,00	17 100,00	350,00		98%
<b>kapital uri xarj ebi</b>	<b>20823,1</b>	<b>1 036,8</b>	<b>315,6</b>	<b>721,2</b>		30% 2%
<b>dakrediteba dafarvis gamokl ebiT</b>	<b>255500</b>	<b>41 627,5</b>	<b>39 617,6</b>	<b>2 009,9</b>		95% 16%
ucxoeTidan miRebul i dafinansebis wyaroebiT da grantebiT gansaxorciel ebel investiciur proeqtebSi Tanamonawil eobisa da Tanadafinansebis xarj ebi		7 200,00	6 680,10	519,90		93%
sagareo val is ZiriTadi Tanxis dafarva		4 694,00	4 690,70	3,30		100%
ucxoeTidan miRebul i dafinansebis wyaroebiT da grantebiT gansaxorciel ebel i investiuri proeqtebi **		28 933,50	27 446,70	1 486,80		95%
saaqcio sazogadoeba `WiaTurmanganumi -		800,00	800,00	-		100%
<b>s u l *</b>	<b>1202260</b>	<b>256 204,0</b>	<b>205 895,1</b>	<b>50 308,9</b>		<b>80% 17%</b>